



PRO  PTO

2025
catalog

index

> Multispectral (thermal) camouflage

Page 3 to 42

MULTISPECTRAL PONCHO

MULTISPECTRAL SUIT

MULTISPECTRAL GHILLIE

MULTISPECTRAL BOLERO

> Ghillie Suit

Page 42 to 74

STALKING HOOD

WOOKIE SUIT

HELMET COVER

> Ghillie bases

Page 75 to 81

> 3D patterns

Page 82 to 121

> Ghillie NIR effectiveness

Page 122 to 133

> 2D patterns

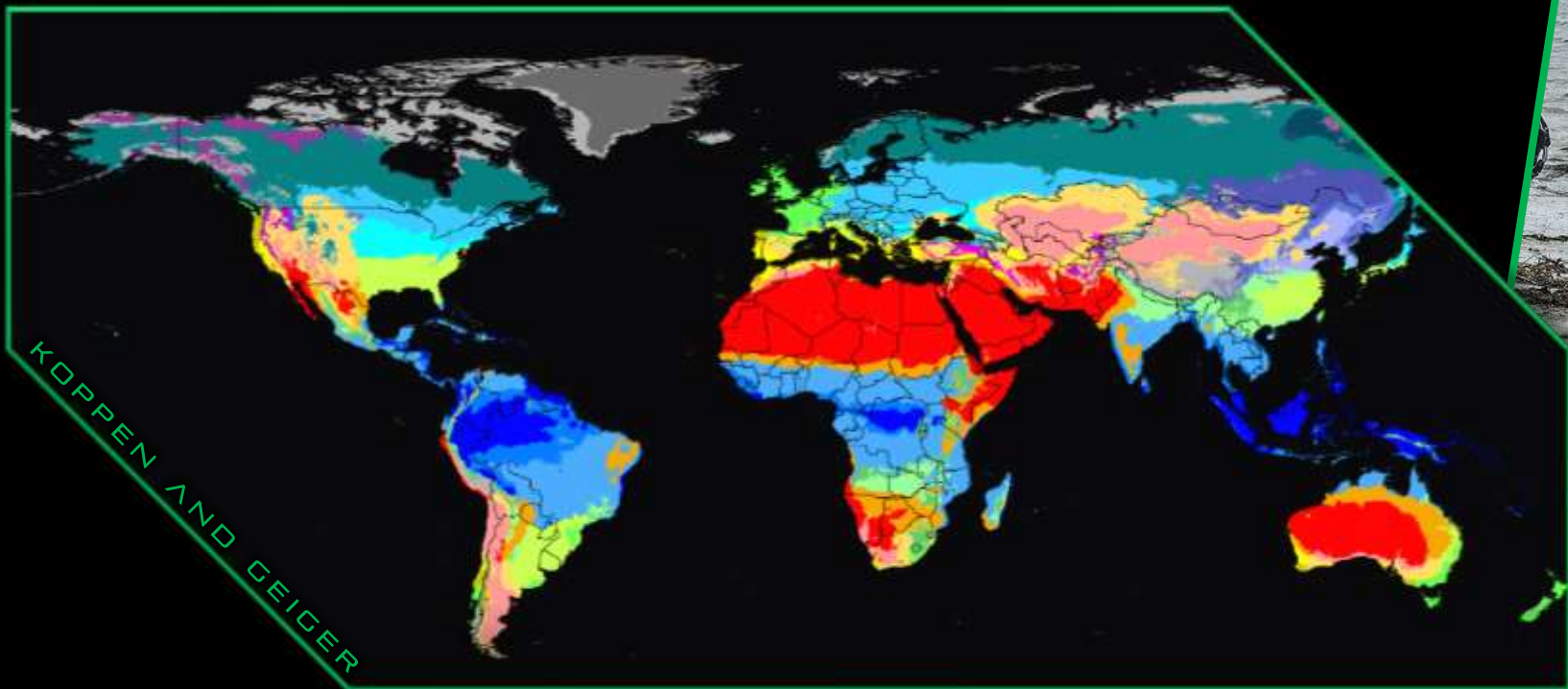
Page 134 to 143

> NATO code and contacts

Page 145 and 146



*Amphibious multispectral Camouflage
based on world wide biomes*



Credits: Italian army



INDIVIDUAL MULTISPECTRAL CAMOUFLAGE
VIS - NIR - TIR

PATENTED IP

ProApto independently developed and patented individual multispectral camouflage (VIS - NIR - TIR) to provide adequate counter-thermal measures against the increasing proliferation of hand and rifle mounted thermal sensors, as well as the escalating threat of thermal drones and UAS. ProApto anti-thermal camouflage provides simultaneous VIS - NIR - TIR concealment, maximising soldiers' survivability and lethality on the contemporary peer-to-peer battlefield.



A person wearing a multispectral camouflage suit is shown in a crouched position, using a tripod-mounted device, possibly a camera or sensor. The scene is dimly lit, suggesting a night or low-light environment. The person's suit is highly textured and appears to blend into the background. The overall image has a blue tint.

FABRIC SPECS.

ProApto multispectral camouflage is based on patented design with the following features:

- thickness: from 0.1mm to 0.5mm
- weight: from 120gsm to 350gsm
- water-resistant
- breathable and not insulating
- extremely silent
- washable with no decay in performance
- can undergo further treatments

3D PATTERN VERSATILITY

All ProApto multispectral camouflage can be enhanced with n.12 3D VIS-NIR camouflage patterns designed for manifold types of operations. More info on [3D patterns](#) can be found at [page 82](#), while more info on [2D patterns](#) are available at [page 134](#).

The 12 3D camouflage patterns range from natural fibers like Jute and Raffia (fire-retardant) to waterproof and fireproof plastic alloys . In addition, natural elements can be added to the camouflage systems for greater camouflage adaptability.



AMPHIBIOUS USE

Since ProApto multispectral camouflage does not decay with time and water, it is suited for amphibious uses and operations ranging from static observation to amphibious reconnaissance. ProApto individual multispectral solutions are equally effective in fresh and salt waters, ensuring stable and long-lasting concealment for the operators. The same item can be used effectively from the sea to the alps.



LWIR

LIGHTWEIGHT *s o l u t i o n*

ProApto individual multispectral camouflage (VIS - NIR - TIR) is lightweight and easily transportable across long distances and transitions. The individual counter-thermal systems with full body coverage range between 1.2 kg and 2.5 kg of weight (on average 1.8 kg) and are packable in 25 x 30 x 30 cm bags. ProApto camouflage platforms feature both highly effective 2D and 3D camouflage, ensuring high adaptability in manifold environments.





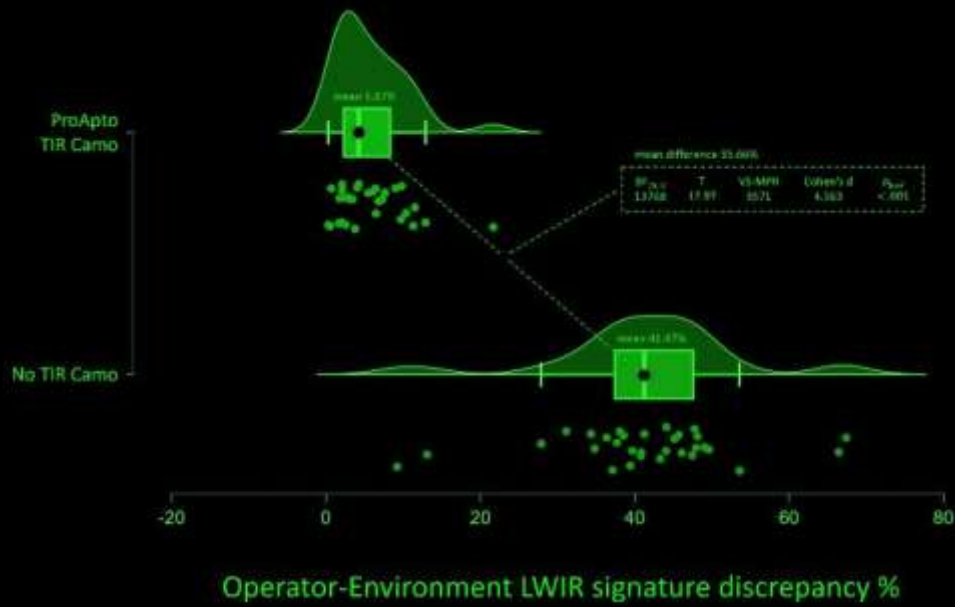
we propose:

6 individual
models

18 2d-camouflage
patterns
for each biome
of the globe

108
different
solutions

DATA ANALYSES

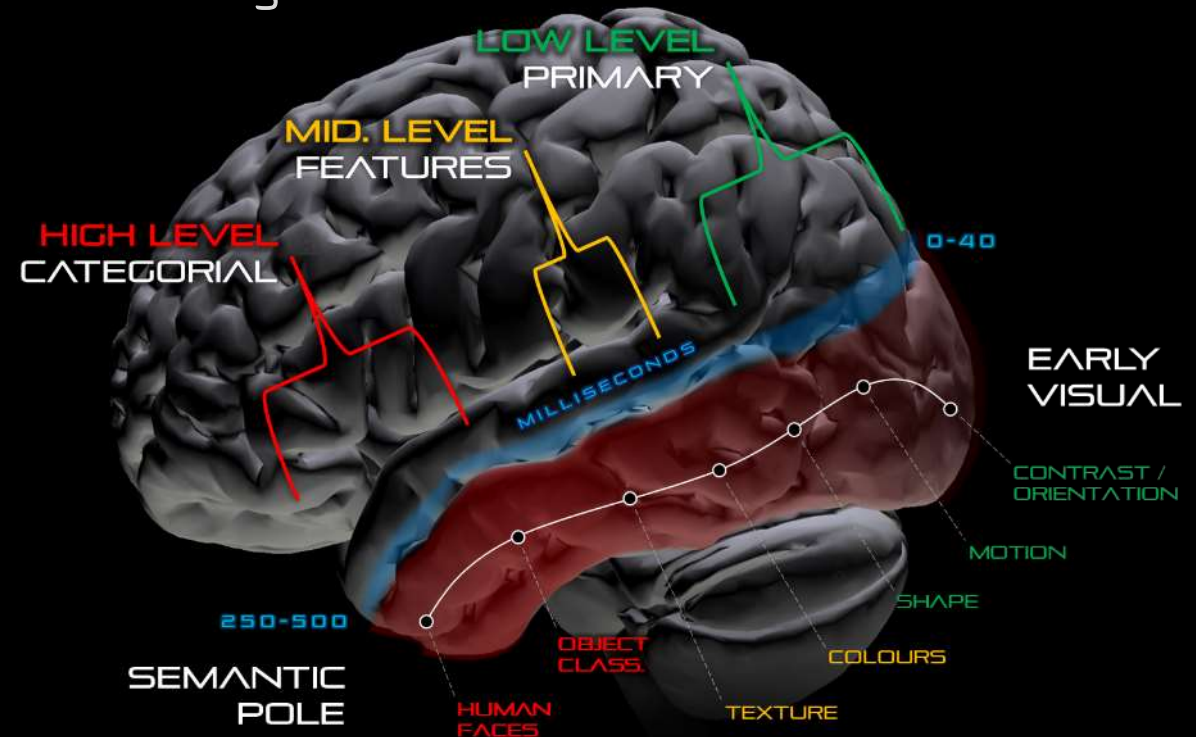


We computed that ProApto multispectral camouflage can significantly reduce the operator's TIR signature and tune it to within 5% of discrepancy from the TIR signature of the environment. Details on demand.



NEUROSCIENCE BASED

ProApto camouflage is designed to interfere at neural level with the neuropsychological processes of object identification and recognition.



INDIVIDUAL MULTISPECTRAL CAMOUFLAGE
MODELS

Recondor multispectral poncho



d e s c r i p t i o n

ProApto RECONDOR is a versatile, modular and multipurpose poncho with detachable hood. The poncho can be used for static observation and worn during movement to drastically reduce soldier's signature. Arms and legs covers can be added to the system in order to achieve full-body coverage. The RECONDOR poncho does not insulate the user, is breathable, silent and suited for amphibious operations.

F A B R I C ' S f e a t u r e s

- thickness: 0.1mm – 0.3mm
- weight: 120gsm – 350gsm
- water-resistant
- breathable and not insulating
- silent
- washable with no decay in performance
- can undergo further treatments

P R O D U C T ' S f e a t u r e s

- Poncho weight: 950 gr
- Poncho dimensions: 135cm x 200cm
- Poncho weight + hood: 1.3 kg
- Poncho weight + limb-covers: 1.8 kg
- Range between 750 gr and 1.8 kg

**WATERPROOF VERSION
NOW AVAILABLE**



Multipurpose poncho/cloak with detachable hood



*To see all our 18 **2D patterns** go to:
www.proapto-camouflage.com/2d-camouflage-patterns*

Modular and multipurpose - additional limb covers



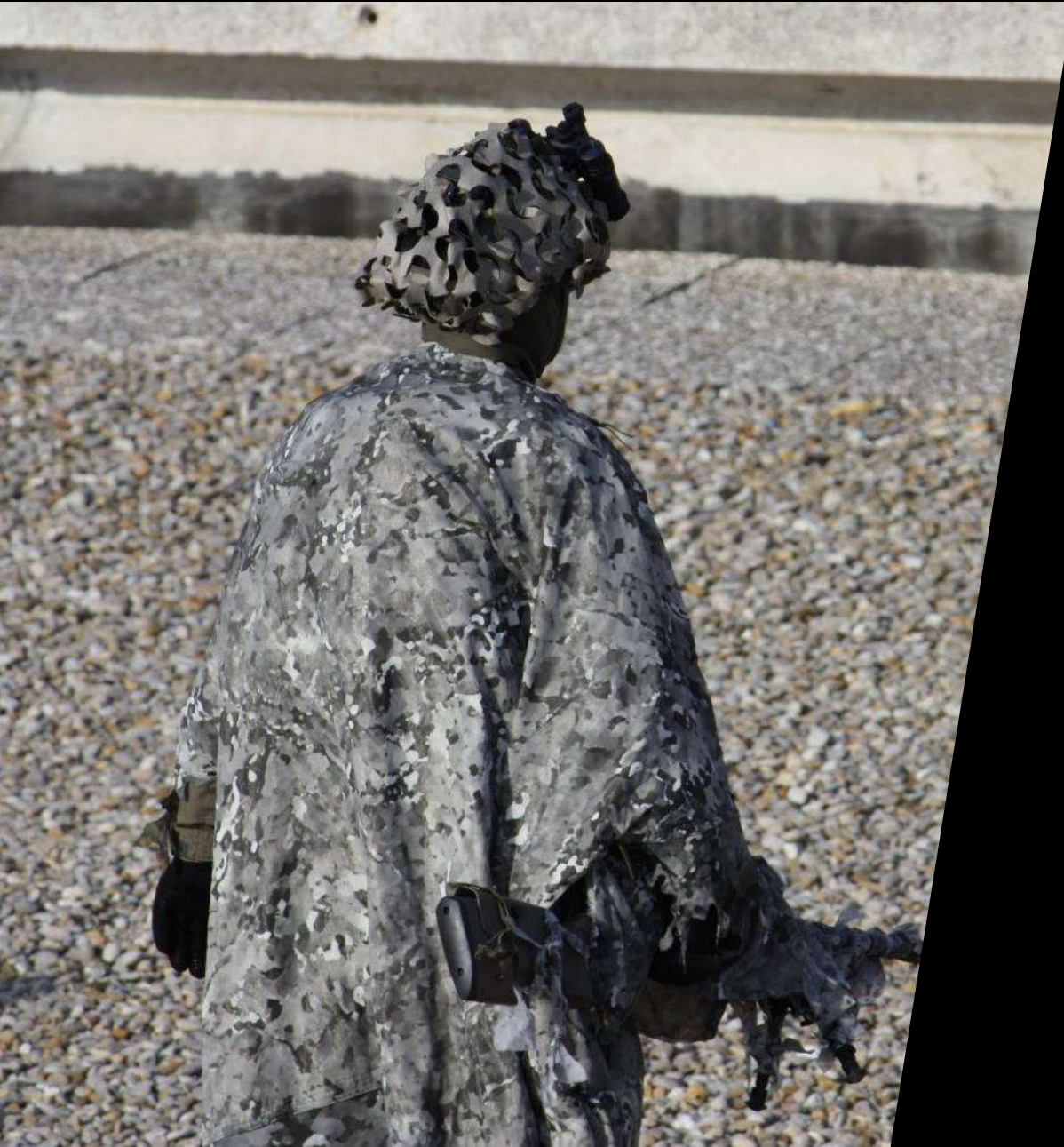
Suitable to conceal observation posts



double sided - reversible system



double sided - reversible system



High nir-swir camouflage effectiveness



Camouflage for urban and industrial environments



a video playlist of *TIR effectiveness*

<https://www.youtube.com/watch?v=7-7Eq5vnX5Q&list=PLQIFsWevgGI GkMZ ex 2ksHTNy VMGPHn tos>

Camouflage for rural and mountain environment



a video playlist of *TIR effectiveness*

<https://www.youtube.com/watch?v=7-7Eq5vnX5Q&list=PLQiFsWevgGI GkMZex2ksHTNyVMGPHntos>

The system can be enhanced with 3d camouflage



*To see all our 12 **3D patterns** go to:*

www.proapto-camouflage.com/3d-camouflage-patterns



Parameters of multispectral effectiveness



300NM

700NM



700NM

2500NM



3000NM

15000NM

Parameters of multispectral effectiveness

- Effective VIS camouflage is offered above 200mt of distance from the observer
- Effective NIR camouflage is offered above 50mt of distance from the observer
- Effective MWIR camouflage is offered above 650mt of distance from the observer in temperature range between 10 and 30 degrees Celsius (RH up to 90%; ATM up to 1013hPA)
- Effective LWIR camouflage is offered above 250mt of distance from the observer in temperature range between 10 and 30 degrees Celsius (RH up to 90%; ATM up to 1013hPA). Out of the above-mentioned environmental conditions, TIR (MWIR – LWIR) camouflage effectiveness is obtained at greater distances from the sensors
- TIR camouflage is provided in daytime and nighttime; direct sunlight may impact TIR effectiveness. High pressure, humidity above 90% and low clouds may reduce multispectral effectiveness requiring greater distances from the sensors
- The Multispectral Camouflage Suits are designed to be worn over the soldier's equipment (ballistic helmets, vests, plate carriers and so on) and do not interfere with head-mounted optronics (like night vision goggles)

occultor multispectral 2D-3d suit



300NM

700NM



700NM

2500NM



3000NM

15000NM

d e s c r i p t i o n

The OCCULTOR suit is a full body system with a modular concept. The main solution is made of a jacket and a detachable hood featuring a net grid with 3D camouflage, allowing application of vegetation. Additionally, 2 leg covers lead to full body coverage. This system is designed for reconnaissance and large movements on the ground, and offer high VIS - NIR - TIR 2D and 3D camouflage.

F A B R I C ' S f e a t u r e s

- thickness: 0.1mm – 0.3mm
- weight: 120gsm – 350gsm
- water-resistant
- breathable and not insulating
- silent
- washable with no decay in performance
- can undergo further treatments

P R O D U C T ' S f e a t u r e s

- Upper body weight : 1.3 kg
- Leg covers weight: 500 gr
- Total weight from 1.3 to 2.5 kg

2D and 3d multispectral camouflage



a video playlist of **TIR effectiveness**

<https://www.youtube.com/watch?v=7-7Eq5vnX5O&list=PLOiFsWevgGIgkMZex2ksHTNyVMGPHntos>

LWIR - 640X512 12 μ M SENSOR (NETD \leq 35MK)

DISTANCE 30MT
TEMP. BC - 16C
HUMIDITY 96%
ATM 1035



PRO  PTO™

LWIR - 640X512 12μM SENSOR (NETD ≤35MK)

DISTANCE 30MT
TEMP. 8C - 16C
HUMIDITY 96%
ATM 1035



PRO  PTO™

Parameters of multispectral effectiveness



300NM

700NM



700NM

2500NM



3000NM

15000NM

Parameters of multispectral effectiveness

- Effective VIS camouflage is offered above 200mt of distance from the observer
- Effective **NIR** camouflage is offered above 50mt of distance from the observer
- Effective **MWIR** camouflage is offered above 650mt of distance from the observer in temperature range between 10 and 30 degrees Celsius (RH up to 90%; ATM up to 1013hPA)
- Effective **LWIR** camouflage is offered above 250mt of distance from the observer in temperature range between 10 and 30 degrees Celsius (RH up to 90%; ATM up to 1013hPA). Out of the above-mentioned environmental conditions, TIR (MWIR – LWIR) camouflage effectiveness is obtained at greater distances from the sensors
- TIR camouflage is provided in daytime and nighttime; direct sunlight may impact TIR effectiveness. High pressure, humidity above 90% and low clouds may reduce multispectral effectiveness requiring greater distances from the sensors
- The Multispectral Camouflage Suits are designed to be worn over the soldier's equipment (ballistic helmets, vests, plate carriers and so on) and do not interfere with head-mounted optronics (like night vision goggles)

Rimator multispectral ghillie suit



300NM

700NM



700NM

2500NM



3000NM

15000NM

d e s c r i p t i o n

The ProApto RIMATOR suit is a multispectral camouflage system designed for snipers. It is composed of 3 pieces: detachable hood, upper body coverage and trousers with additional option of boot covers. The dorsal portion of the suit is covered by a net grid with 3D elements. The grid enables to apply natural elements to maximize concealment. The ventral portion is covered with abrasion-resistant fabric for crawling.

F a b r i c s ' F E A T U R E S

- thickness: 0.3mm – 1mm
- weight: 300gsm – 650gsm
- water-resistant
- breathable
- silent
- washable with no decay in performance
- can undergo additional treatments

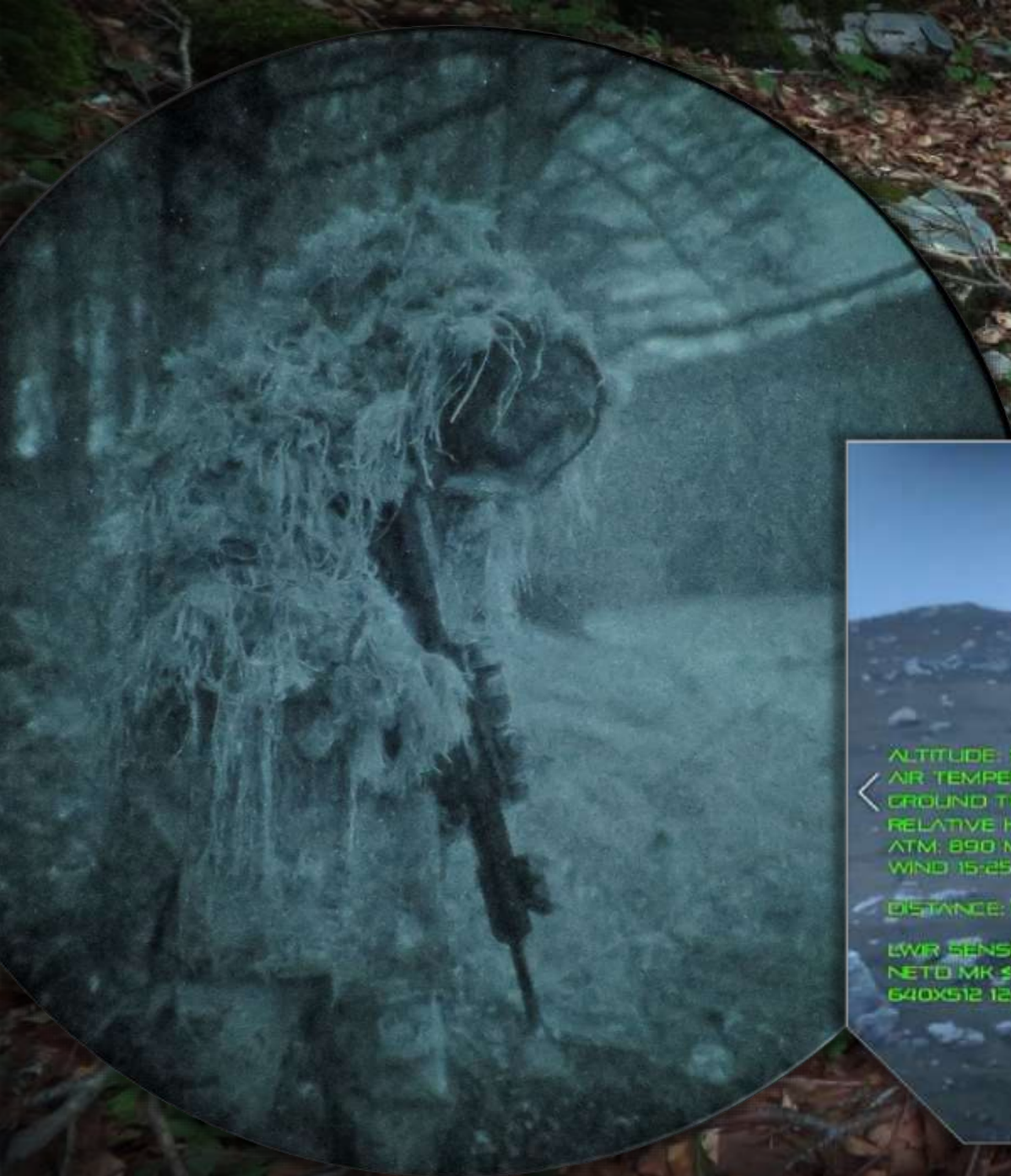
P R O D U C T ' S f e a t u r e s

- Maximum weight: 5.2 kg
- Universal sizing
- 2D camouflage available in 18 patterns
- 3D camouflage available in 12 patterns

The suit can be produced in 12 3d camo patterns



To see all our 12 3D patterns go to:
www.proapto-camouflage.com/3d-camouflage-patterns



ALTITUDE: 1200 MT
AIR TEMPERATURE: 15° C
GROUND TEMPERATURE: -2° C
RELATIVE HUMIDITY: 97%
ATM: 890 MBAR
WIND: 15-25 KM/H

DISTANCE: 110 MT

LWR SENSOR USED:
NETD MK 335
640X512 12μM



Multispectral suit for operations at short range

a video playlist of TIR effectiveness

<https://www.youtube.com/watch?v=7-7Eq5vnX5Q&list=PLQiFsWevgGI GkMZex2ksHTNyVMGPHntos>



Parameters of multispectral effectiveness



300NM

700NM



700NM

2500NM



3000NM

15000NM

Parameters of multispectral effectiveness

- Effective **VIS** camouflage is offered above 50mt of distance from the observer
- Effective **NIR** camouflage is offered above 20mt of distance from the observer
- Effective **MWIR** camouflage is offered above 300mt of distance from the observer in temperature range between 10 and 30 degrees Celsius (RH up to 90%; ATM up to 1013hPA)
- Effective **LWIR** camouflage is offered above 100mt of distance from the observer in temperature range between 10 and 30 degrees Celsius (RH up to 90%; ATM up to 1013hPA). Out of the above-mentioned environmental conditions, TIR (MWIR – LWIR) camouflage effectiveness is obtained at greater distances from the sensors
- **TIR camouflage** is provided in daytime and nighttime; direct sunlight may impact TIR effectiveness. High pressure, humidity above 90% and low clouds may reduce multispectral effectiveness requiring greater distances from the sensors
- The Multispectral Camouflage Suits are designed to be worn over the soldier's equipment (ballistic helmets, vests, plate carriers and so on) and do not interfere with head-mounted optronics (like night vision goggles)



p r a e d a t o r m u l t i s p e c t r a l b o l e r o



300NM

700NM



700NM

2500NM



3000NM

15000NM

d e s c r i p t i o n

ProApto PRAEDATOR is an upper-body multispectral camouflage mostly designed for trench lines, foxholes and sniper hides. The system covers the head, face, arms and upper back and torso, it is designed for ambush and in any situation where the operator is static into some sort of protection. For example, the use in trench lines. PRAEDATOR can be used in combination with other camouflage products to achieve full-body camo.

F A B R I C ' S f e a t u r e s

- thickness: 0.1mm – 0.3mm
- weight: 120gsm – 350gsm
- water-resistant
- breathable and not insulating
- silent
- washable with no decay in performance
- can undergo further treatments

P R O D U C T ' S f e a t u r e s

- Bolero weight : 350-800 gr
- Combinable with RECONDOR system



The suit can be produced in 12 3d camo patterns



To see all our 18 2D patterns go to:

www.proapto-camouflage.com/2d-camouflage-patterns

Parameters of multispectral effectiveness

- Effective VIS camouflage is offered above 200mt of distance from the observer
- Effective **NIR** camouflage is offered above 50mt of distance from the observer
- Effective **MWIR** camouflage is offered above 650mt of distance from the observer in temperature range between 10 and 30 degrees Celsius (RH up to 90%; ATM up to 1013hPA)
- Effective **LWIR** camouflage is offered above 250mt of distance from the observer in temperature range between 10 and 30 degrees Celsius (RH up to 90%; ATM up to 1013hPA). Out of the above-mentioned environmental conditions, TIR (MWIR – LWIR) camouflage effectiveness is obtained at greater distances from the sensors
- TIR camouflage is provided in daytime and nighttime; direct sunlight may impact TIR effectiveness. High pressure, humidity above 90% and low clouds may reduce multispectral effectiveness requiring greater distances from the observer
- The Multispectral Camouflage Suits are designed to be worn over the soldier's equipment (ballistic helmets, vests, plate carriers and so on) and do not interfere with head-mounted optronics (like night vision goggles)



G H I L L I E S U I T S



MODULAR - MULTIPURPOSE GHILLIE SUITS
VIS - NIR

ITALIAN CRAFTSMANSHIP

Our Camouflage systems are completely designed and made in Italy sourcing Italian and European materials (only raffia comes from Africa). Our uniquely trained Italian artisans take days to handmade ProApto Ghillies: this is the reason why production is on demand and usually takes from 30 to 180 days to receive the order.

ITALIAN
materials





we propose:

9 ghil lie
models

12

patterns
for each biome
of the globe

108

different
products

GHILLIE SUIT RENOVATION

From 2015 ProApto revised and extended the common Ghillie Suit design, proposing an innovative system minimizing the common problems related to Ghillie suit usage. Overheating, cumbersomeness, heavy weights and textile freezing are issues you won't ever experience using ProApto Ghillies.

ProApto's design ensures high breathability, low weight and unpaired modularity and versatility in any environment and weather.



A person wearing a Ghillie suit is lying in a field of tall grass, demonstrating the camouflage system. The image is overlaid with a teal color filter.

PATENTED *design*

ProApto 3D Ghillie patterns and Ghillie bases are patented in over 30 countries. Our Ghillies are built on a patented plastic alloy, **fully waterproof**, extremely silent and lightweight, which ensures long lasting camouflage system and **full breathability** and sensory awareness. The design of each Ghillie model is fully adjustable according to individual and operational needs or different sizing.

3D PATTERN VERSATILITY

All ProApto Ghillie Models can be produced in the ProApto standardised 3D Ghillie Patterns. ProApto is the only company providing 3D patterns and has the widest 3D material choice in the world.

The n.12 3D camouflage patterns range from natural fibers like Jute and Raffia to waterproof and fireproof plastic alloys. In addition, natural elements can be added to the camouflage systems for greater camouflage adaptability.

More info on 3D patterns are available at [page 82](#).





Explore videos

We provide several videos of the Visual and Near infra-red effectiveness of our Ghillie Suits. Our **YouTube** channel hosts **over 250 videos** organised for Ghillie models and for 3D camouflage patterns.

At the link below, you can find a YouTube playlist showcasing several environmental tests and demonstrations we carried out over the years:

<https://www.youtube.com/@ProApto/playlists>

UNPAIRED CAMOUFLAGE

All ProApto Ghillie suits offer high 3D camouflage effectiveness (VIS and NIR) within and beyond the intended environment of use. Indeed, the versatile 3D camouflage material is designed to perfectly blend in the operational environment while being deployed in the transitional biomes related to the main environment of use. The application of natural elements or additional 3D camouflage only enhances the 3D adaptability of ProApto Ghillie systems.





GHILLIES' *features*

ProApto Ghillie suits offer the following features:

- waterproof, highly breathable base made of high-resistance plastic alloy. All bases are modular and MOLLE compatible
- possibility to apply vegetation and additional 3D material on the whole system (not only in specific areas)
- high VIS and NIR effectiveness even at very short range

GHILLIE SUIT MODELS



STALKING-HOOD



AVERAGE WEIGHT 500GR

STALKING-HOOD®



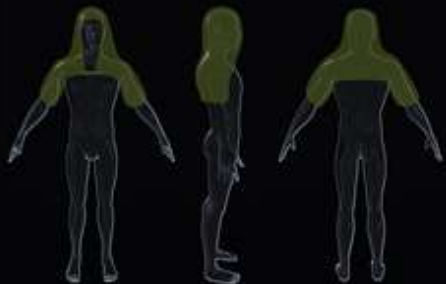
DESCRIPTION

The Stalking-Hood is the enhanced version of the classic Viper-Hood.

This redesign boasts improved features and a longer back for better coverage. We avoided fabric entirely, as it can easily rip and get wet, and replaced it with lightweight netting. The mesh base is extra-resistant, highly breathable and waterproof. In addition, it is MOLLE-compatible, allowing you to attach small pouches, radios, knives and binoculars to the chest area.

The Stalking-Hood is a modular item that, combined with a Multipurpose Ghillie Cape Shelter 1, forms a Multipurpose Modular Stalking Suit (MMSS), a stalking suit that conceals a large portion of the body, as well as backpacks of several sizes. It weighs between 350g-950g. It can be transported inside a pouch or draped over a backpack.

BODY COVERAGE




> FEATURES

- WATERPROOF BASE
- BREATHABLE BASE
- WEIGHT 350/950 GR
- MOLLE COMPATIBLE
- MODULAR DESIGN
- THERMAL CAMO
- IR COLOURS

> USES

- MILITARY OPS.
- RECON
- STALKING
- HUNTING
- ANTIPOACHING
- PHOTOGRAPHY
- AIRSOFT/MILSIM

A person wearing a ghillie suit is seen from behind, standing in a forest. The suit is made of a dense, textured material of twigs and leaves, designed for camouflage. The person is positioned in the center-left of the frame, looking towards the right. The forest floor is covered in moss and fallen branches, with sunlight filtering through the trees, creating a dappled light effect. The background shows several tall, thin tree trunks and a dense canopy of leaves.

STALKING-HOOD+EXT



AVERAGE WEIGHT 900GR

STALKING-HOOD[®] + BACK EXTENSION MOD.



DESCRIPTION

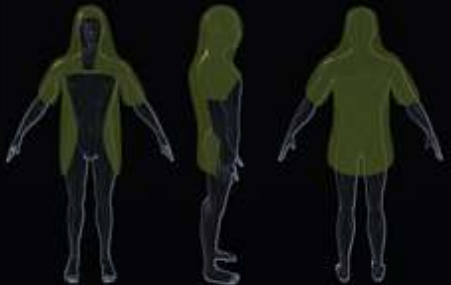
The Stalking-Hood + detachable back extension provides the same body coverage as a standard "cobra hood" style ghillie (head, shoulders, back).

The extension can be removed by untangling paracord knots or unhooking buckles (provided upon request). It can be used as a backpack cover or as a way of concealing a firearm/camera during stakeouts.

The overall weight of this Ghillie varies between 450gr if made in pattern Greenzone, Broad Leaved woodland or Lagoon, or 1.1kg if made in other patterns.

This configuration can be further extended by adding removable sleeves extensions and face coverings. Such additions would be the upper part of the full-body Ghillie described later in this document.

BODY COVERAGE



> FEATURES

- WATERPROOF BASE
- BREATHABLE BASE
- WEIGHT 500/1600 GR
- MOLLE COMPATIBLE
- MODULAR DESIGN
- THERMAL CAMO
- IR COLOURS

> USES

- MILITARY OPS.
- RECON
- STALKING
- HUNTING
- ANTIPOACHING
- PHOTOGRAPHY
- AIRSOFT/MILSIM

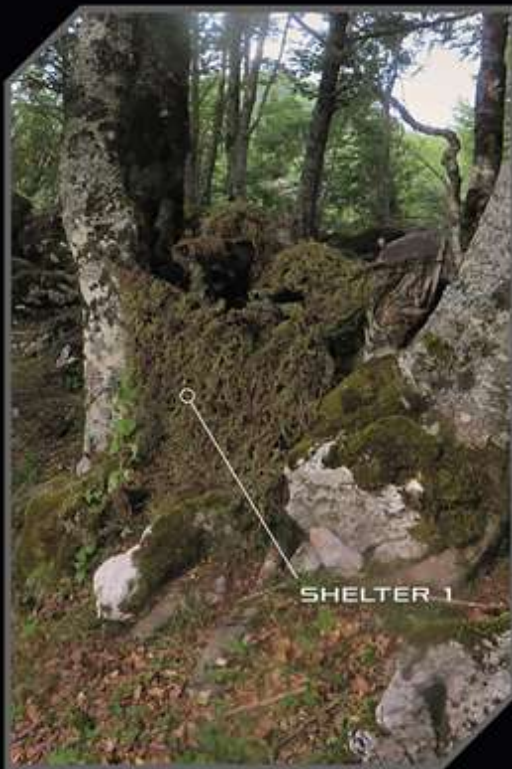
A lush, green forest scene featuring moss-covered rocks and ferns. The forest floor is covered in a thick layer of moss and various types of ferns. The trees are tall and slender, with their trunks visible in the background. The lighting is soft and dappled, suggesting a dense canopy above. The overall atmosphere is serene and natural.

GHILLIE CAPE 1



AVERAGE WEIGHT 700GR

MULTIPURPOSE GHILLIE CAPE SHELTER-1®



DESCRIPTION

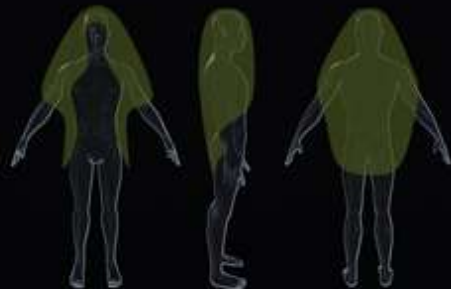
The Multipurpose Ghillie Cape Shelter 1 is a multipurpose ghillie. Designed for military use, in particular for recon activities and to be used as a personal camouflage system when the base is not covered by 3D camouflage material.

When worn, the Ghillie Cape Shelter 1 breaks the outline of the head and shoulders while concealing the back, greatly disrupting the human figure.

It can withstand up to 300 kg of weight. It has no sleeves nor hood, and it can be worn securing it to a boonie hat or a helmet.

The Shelter 1 can also be converted into a suspended shelter such as a hammock-chair or a suspended platform. Also converts into a shelter for stealth camping and a spotting shelter. It can function as an emergency litter or to transport hunted game.

BODY COVERAGE



> FEATURES

- WATERPROOF BASE
- BREATHABLE BASE
- WEIGHT 500/1100 GR
- DIMENSION 1x1 MT
- MODULAR DESIGN
- THERMAL CAMO
- IR COLOURS

> USES

- STALKING SHELTER
- SUSPENDED HUT
- BACKPACK COVER
- MILITARY OPS.
- RECON
- ANTIPOACHING
- HUNTING/FISHING



WOOKIEE SUIT

NATO STOCK NUMBER - 8415150331196





AVERAGE WEIGHT 2KG

FULL BODY MODULAR GHILLIE 'WOOOKIE-SUIT'®



DESCRIPTION

The full-body Suit conceals 70% of the body, including hands and feet.

The upper piece is a **Stalking-Hood** with added back extension, long sleeves and a Dorsal Hand Ghillie Cover. The lower piece consists of Modular Ghillie Over-trousers with added Side and Back Ghillie Boot Covers. The Ghillie Overtrousers are fully adjustable and allow for easier crawling, as they do not cover or restrict the inner leg (the body part most involved in crawling) or the front as standard ghillie trousers usually do. Face and chest coverings can be added if needed.

This Wookiee Suit is modular and breathable, suitable for all types of clothing in every season. The design does not interfere with any configuration and thanks to its mesh base, antenna and cables can be passed through it with no issues. The weight ranges from 1.2kg to 2.5kg depending the pattern chosen.

BODY COVERAGE



> FEATURES

- WATERPROOF BASE
- BREATHABLE BASE
- WEIGHT 0.9/2 KG
- MOLLE COMPATIBLE
- MODULAR DESIGN
- THERMAL CAMO
- IR COLOURS

> USES

- MILITARY OPS.
- RECON
- STALKING
- HUNTING
- ANTIPOACHING
- PHOTOGRAPHY
- AIRSOFT/MILSIM

A person is shown in a forest, wearing a ghillie helmet cover. The cover is made of a dense, textured material, possibly fabric or twigs, and is heavily camouflaged with natural elements like twigs, leaves, and small branches. The person is wearing a dark jacket and a light-colored turtleneck. The background consists of many thin tree trunks and some bare branches, suggesting a wooded area. The lighting is natural, with some shadows and highlights on the trees and the person's gear.

GHILLIE HELMET COVER

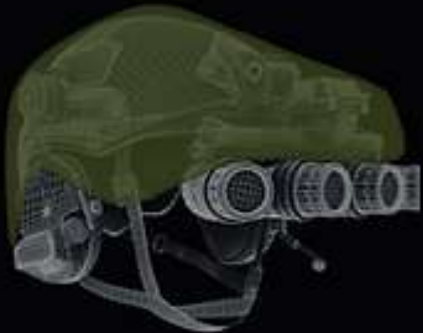
GHILLIE HELMET COVER^{VI} - SIDESHOW BOB



DESCRIPTION

The Ghillie Helmet Cover is a heavy-duty base for concealing your head and it will stay with you for years. It is made with a waterproof NIR high-resistance net (the same of our Ghillies), which enables applying vegetation and passing cables through it. Ear protections can be adjusted effortlessly, and IR signaling lights remain visible when covered by the Ghillie. Lights can function properly when the Ghillie cover is on the helmet because the net base makes it possible to place light bulbs in-between the meshes. Night vision mounts and night vision goggles can be placed and removed without problems since the Ghillie Helmet Cover can be easily secured to them. The Ghillie Helmet Cover can be secured to any helmets thanks to paracord strings (or zip-ties if you prefer a more stable and "long-term" setup). The Ghillie Helmet Cover is also adjustable and customizable depending on specific personal requirements.

HELMET COVERAGE



> FEATURES

- UNIVERSAL FIT
- WATERPROOF BASE
- WEIGHT 100-150GR
- 60CM X 40CM
- IR CAMO
- THERMAL CAMO
- ADD VEGETATION

> USES

- WHEN NOT ON THE HELMET IT CAN BE ALSO USED AS:
- HEAD 'GHILLIE-HAT'
- RIFLE/SCOPE COVER
- CAMERA COVER
- SIDESHOW BOB

A close-up photograph of a tree trunk, heavily covered in moss and lichen. The tree trunk is the central focus, showing intricate textures of green and brown. To the left, there is a dense thicket of green foliage, possibly a large fern or similar plant, which is also covered in moss. The background is a soft-focus forest scene with sunlight filtering through the leaves. The overall atmosphere is natural and serene.

OTHER GHILLIE MODELS

MODULAR MULTIPURPOSE STALKING SUIT (MMS1)®



DESCRIPTION

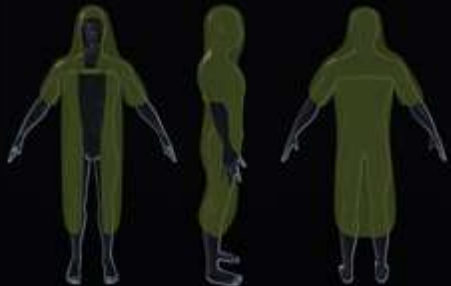
Stalking-Hood Modular Multipurpose Stalking Suit is the combination of the **Stalking-Hood** and the **Multipurpose Ghillie Cape Shelter 1**, for a greater body coverage.

It allows several options:

1. Cover head, shoulders and upper arms (using only the **Stalking-Hood**)
2. Cover head, shoulders and back (using only a **Multipurpose Ghillie Cape Shelter 1**)
3. Cover head, shoulders, upper arms, back, and the upper legs (combining the **Stalking-Hood** with the **Multipurpose Ghillie Cape Shelter 1**)

This Modular Suit can be useful for stalking activities. The **Stalking-Hood** can be easily worn even with a large backpack (30L-70L), and the **Ghillie Cape Shelter 1** can be secured over the backpack as a ghillie cover.

BODY COVERAGE



> FEATURES

- WATERPROOF BASE
- BREATHABLE BASE
- WEIGHT 0.9/1.6 KG
- MOLLE COMPATIBLE
- MODULAR DESIGN
- THERMAL CAMO
- IR COLOURS

> USES

- STALKING SHELTER
- SUSPENDED HUT
- STEALTH HIKING
- STEALTH CAMPING
- MILITARY OPS.
- ANTIPOACHING
- HUNTING/FISHING

MULTIPURPOSE G. CAPE - 'COBRA-HOOD'[®]



DESCRIPTION

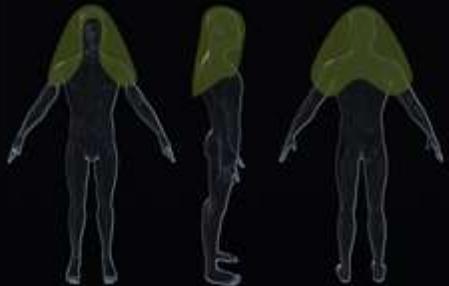
A minimalist Multipurpose Ghillie designed with wildlife photography in mind. It conceals the head and shoulders, breaking up and rounding off the human silhouette (in the same fashion as [Shelter1](#), [Shelter2](#) and the [Ghillie Cape Hammock](#)).

Like all our ghillies, it is featured with the Peripheral Visual Field – Hood System (PVF-HS), a system that allows for a full field of view, which can be implemented by adjusting cords near the eyes and the back of the head.

It weighs between 300gr-800gr. Due to its extreme packability, it can even fit inside a medical pouch if made in raffia.

It can double as a backpack cover or a wildlife-spotting net to conceal a camera and its operator.

BODY COVERAGE



> FEATURES

- WATERPROOF BASE
- BREATHABLE BASE
- WEIGHT 0.350/850 GR
- DIMENSION 0.5x1 MT
- MODULAR DESIGN
- THERMAL CAMO
- IR COLOURS

> USES

- BACKPACK COVER
- STALKING NET
- PHOTOGRAPHY
- ANTIPOACHING
- HUNTING
- STALKING
- RECON

MULTIPURPOSE GHILLIE CAPE SHELTER-2[®]



DESCRIPTION

A larger version of Cape Shelter 1, the Shelter 2 is 1.50 m x 1.20 m, with the same uses and features of Shelter 1, except it also covers the upper arms and thighs.

It can serve as a small hammock. Shelter 2 weighs 600 gr (raffia version) and 1.2 kg (jute version). It's often chosen by army snipers due to its versatility and the body area it covers. During movements, this Ghillie can be easily placed over large backpacks and provide coverage of the head and shoulders. While on static operations it serves to cover trench lines entrances, or as a see-through blind for sniper hides. Alternatively, it can be worn covering also the sniper weapon system.

BODY COVERAGE



> FEATURES

- WATERPROOF BASE
- BREATHABLE BASE
- WEIGHT 500/1600 GR
- DIMENSION 1.2x1.5 MT
- MODULAR DESIGN
- THERMAL CAMO
- IR COLOURS

> USES

- STALKING SHELTER
- SUSPENDED HUT
- STEALTH HIKING
- STEALTH CAMPING
- MILITARY OPS.
- ANTIPOACHING
- HUNTING/FISHING

Multiple Multipurpose Ghillie Cape Shelter 2LL can be combined together as to cover vehicles and observation posts. Also, the shelter 2 can be combined with shelters 1 and multipurpose ghillie cape hammocks.

MULTIPURPOSE GHILLIE CAPE HAMMOCK®



DESCRIPTION

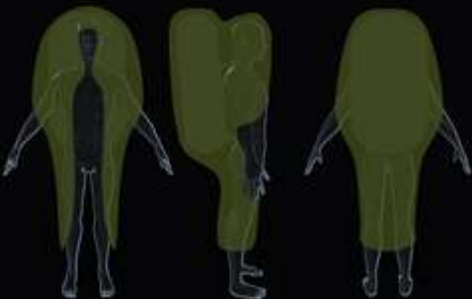
A Multipurpose Ghillie designed for long-distance expeditions spanning over multiple days. This device offers full concealment of the body + a large backpack (40-70L).

It weighs 1.1 kg (rafia version) or 2.3 kg (jute version). It can be compressed to the size of a large sleeping bag (approximately 60x40x30cm).

This Ghillie conceals you and your backpack at all times, whether you are on the move during the day or camped down at night. The Ghillie Cape Hammock is a wearable concealed sleeping system, converting into a Camouflaged Ghillie Hammock to sleep in.

It can also convert into a spotting shelter or a suspended platform, and function as an emergency stretcher or to transport hunted game.

BODY COVERAGE



> FEATURES

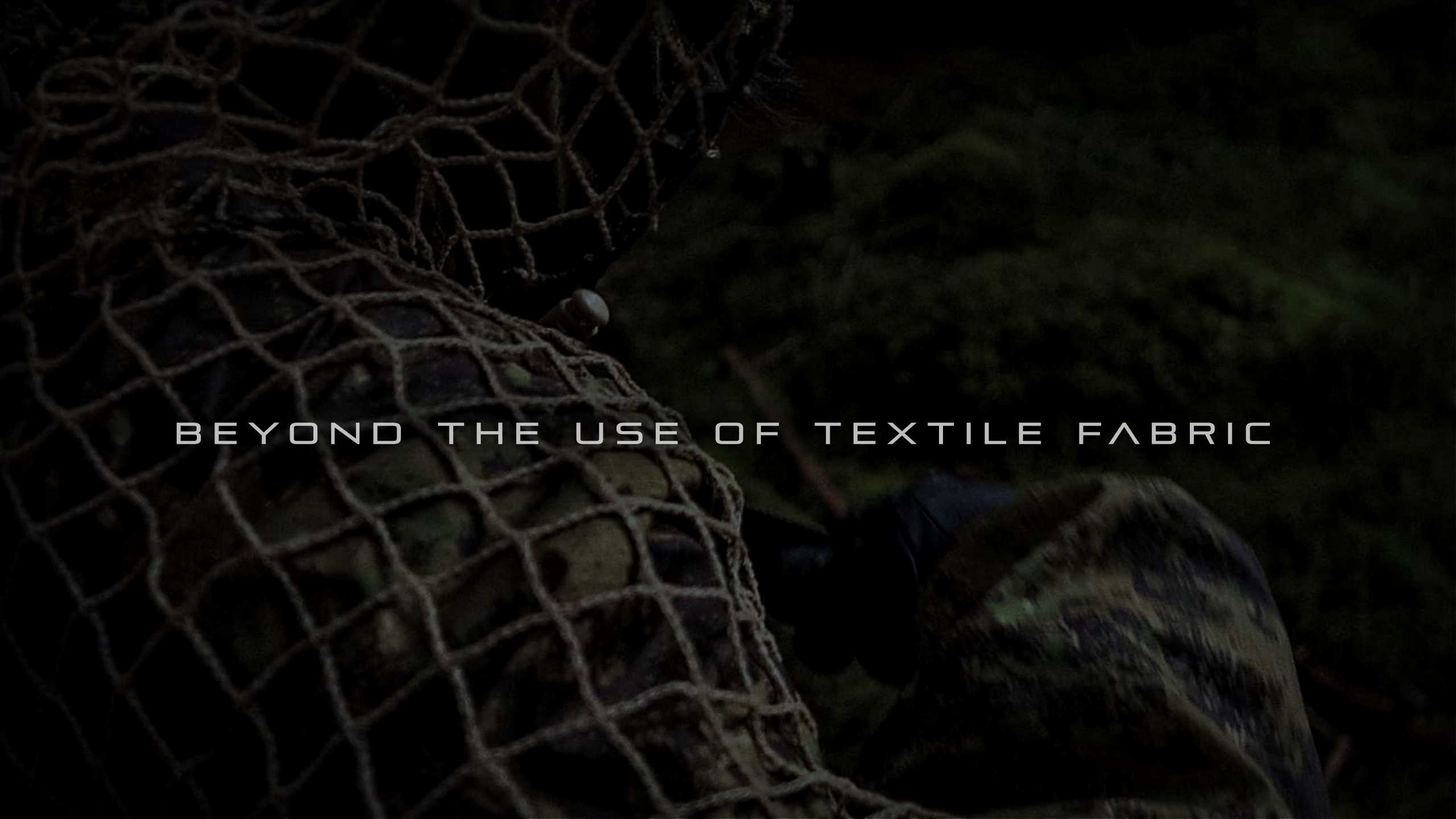
- WATERPROOF BASE
- BREATHABLE BASE
- WEIGHT 0.9/2.5 KG
- DIMENSION 1.5x3 MT
- MODULAR DESIGN
- THERMAL CAMO
- IR COLOURS

> USES

- STALKING SHELTER
- SUSPENDED HUT
- HAMMOCK
- STEALTH HIKING
- STEALTH CAMPING
- MILITARY OPS.
- HUNTING



G H I L L I E B A S E S

A dark, moody photograph of a fishing net with a fish inside, set against a dark background. The net is made of thick, light-colored rope and is draped over a dark, textured surface. A single fish is visible through the net, its body partially obscured by the mesh. The lighting is low, creating a sense of mystery and depth. The overall tone is somber and contemplative.

BEYOND THE USE OF TEXTILE FABRIC

GHILLIE BASES

By avoiding the use of fabric, these bases sort out the main issue related to ghillie suit uses.

This new concept eliminates the common problems of overheating, cumbersomeness and discomfort with its advanced lightweight and highly breathable design.

These bases enable full maneuverability and high packability while remaining easily adaptable to various individual configurations.

weight ranging from 170gr
to 500gr (full-body)





MAIN FEATURES

- NIR COMPLIANT
- FLAME RETARDANT
- MOLLE COMPATIBLE
- FULLY WATERPROOF
- HIGHLY BREATHABLE
- HIGH PACKABILITY

*Vis
n ir*



each mesh can hold up to
55kg of direct traction

ADDITIONAL FEATURES

The whole base structure enables to apply 3D camouflage and vegetation in any part of the base without being restricted to specific body portions, as it was with conventional ghillie suits.

The design is fully adjustable according to individual and operational needs or different sizing.

Versatility and Modular Design.
Extension, sleeves and face covers can be added and removed easily.





...APPLY 3D CAMOUFLAGE AND VEGETATION
IN ANY PART OF THE BASE...

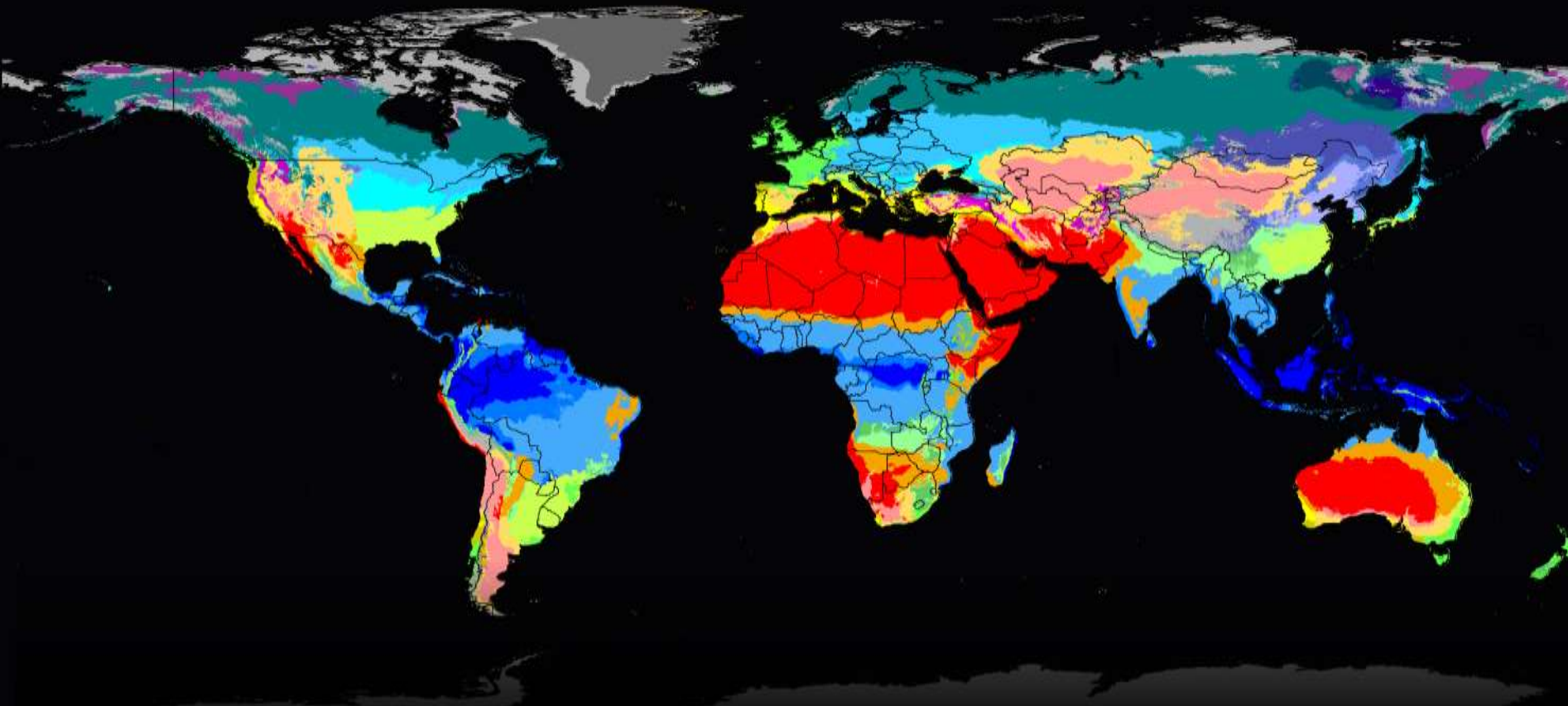
STANDARDIZED 3D GHILLIE PATTERNS

VIS - NIR

A dense forest of evergreen trees, likely spruce or fir, with a fallen log in the foreground. The scene is dimly lit, creating a dark and moody atmosphere. The text "A SCIENCE-BASED APPROACH" is overlaid in the center in a white, sans-serif font.

A SCIENCE-BASED APPROACH

KOPPEN AND GEIGER CLIMATE CLASSIFICATION



FIRST LETTER	SECOND LETTER	THIRD LETTER
A	F FULLY HUMID	H HOT ARID
B	M MONSOON	K COLD ARID
C	S DRY SUMMER	A HOT SUMMER
D	W DRY WINTER	B WARM SUMMER
E	W DESERT	C COOL SUMMER
	S STEPPE	D COLD SUMMER
	T TUNDRA	
	F FROST	

TROPICAL	DRY	TEMPERATE			CONTINENTAL			POLAR
		DRY SUMMER	DRY WINTER	FULLY HUMID	DRY SUMMER	DRY WINTER	FULLY HUMID	
AF	BWh	Csa	Cwa	Cfa	Dsa	Dwa	Dfa	ET
Am	BWk	Csb	Cwb	Cfb	Dsb	Dwb	Dfb	EF
Aw	BSh		Cwc	Cfc	Dsc	Dwc	Dfc	
	BSk				Dsd	Dwd	Dfd	

BECK, H., ZIMMERMANN, N., MCVICAR, T. ET AL. PRESENT AND FUTURE KÖPPEN-GEIGER CLIMATE CLASSIFICATION MAPS AT 1KM RESOLUTION. *SCI DATA* 5, 180214 (2018). <https://doi.org/10.1038/s41598-018-28102-4>

Our ghillies can be produced in a variety of standardized patterns we developed (a total of **12 3D patterns**), which were designed on the basis of environment types defined by the **worldwide mapping of climates and biomes** by Koppen and Geiger.

The standardized Ghillie patterns ensure great effectiveness in their intended environment while being as versatile as possible. Each of the 9 ProApto Ghillie models and Thermal camouflage can be produced in these standardised Ghillie patterns.

All 3D patterns can be implemented with natural vegetation or additional 3D material.



GREENZONE

GREENZONE

FULLY-HUMID ENVIRONMENTS

GREENZONE



TROPICAL FORESTS OR ALPINE GRASSY MEADOWS

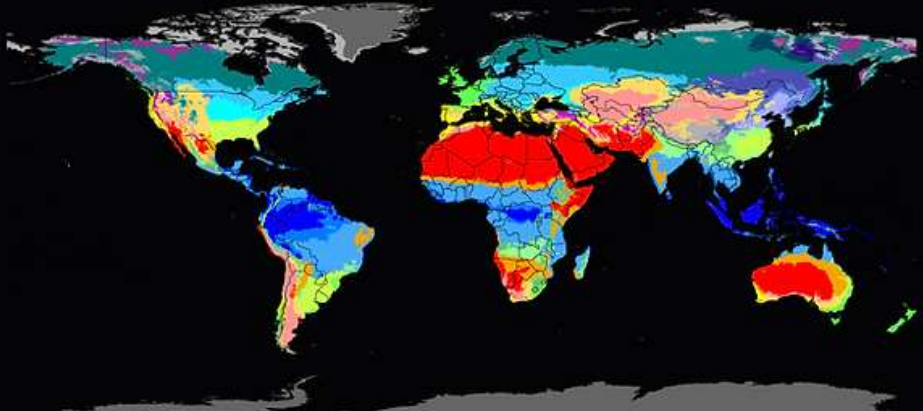
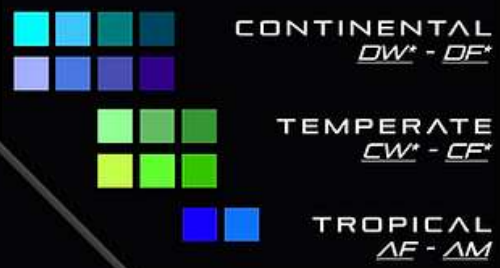


KÖPPEN-GEIGER

BIOMES CLIMATE CLASSIFICATION USE

GRASSY AREAS

SUMMER/SPRING



Inspired by the PenCott Camouflage GreenZone pattern, we developed the Greenzone for green areas such as mountain woods, meadows, northern forests and mountain ridges in summertime.

It is a **specific**, continental pattern and it can be integrated with any of our camouflage fibres. Despite the intense green colouring, it adapts well to broad-leaved woods and to the autumn season. Greenzone is made using only raffia in order to blend effectively in lush grassy regions.

In tropical and fully humid hot environments, it finds the right placement thanks to the high breathability provided by raffia on our Ghillie bases. In addition, raffia is highly lightweight and retains less water than jute, cotton and other synthetic fabrics, therefore it is suitable to being used in tropical biomes.

Its NIR reflectance is consistent with green vegetation.

TRANSITION





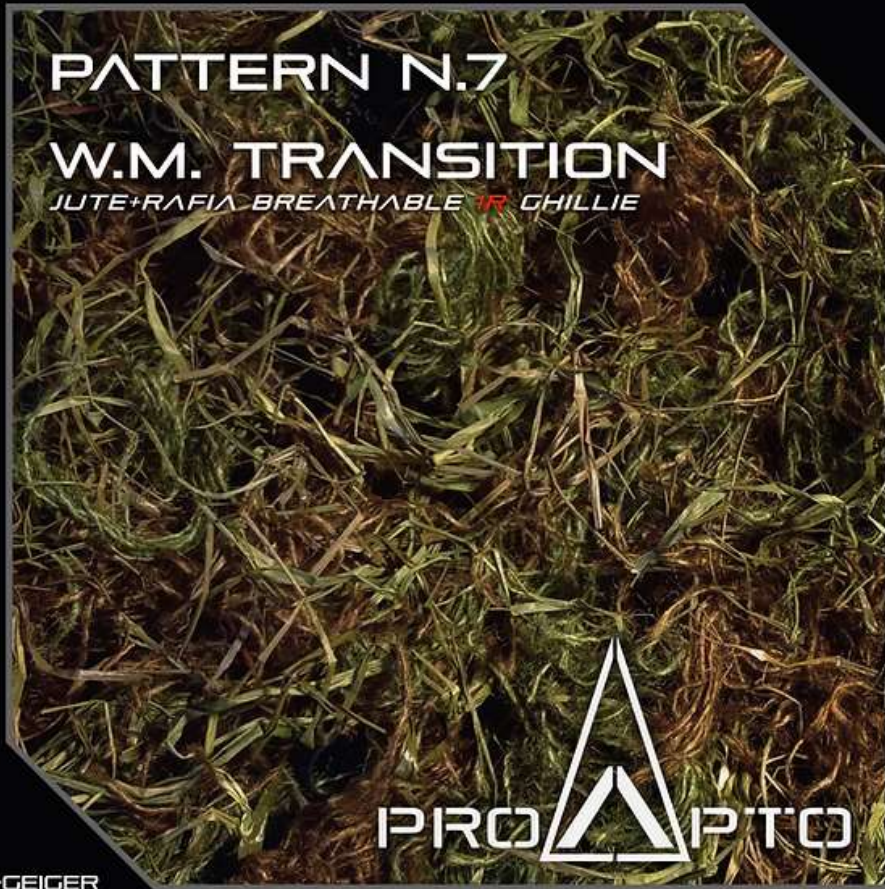
TEMPERATE AND CONTINENTAL ENVIRONMENTS

TRANSITION

TRANSITING FROM THE WOODS TO THE MOUNTAINS



PATTERN N.7
W.M. TRANSITION
 JUTE+RAPIA BREATHABLE IR GHILLIE

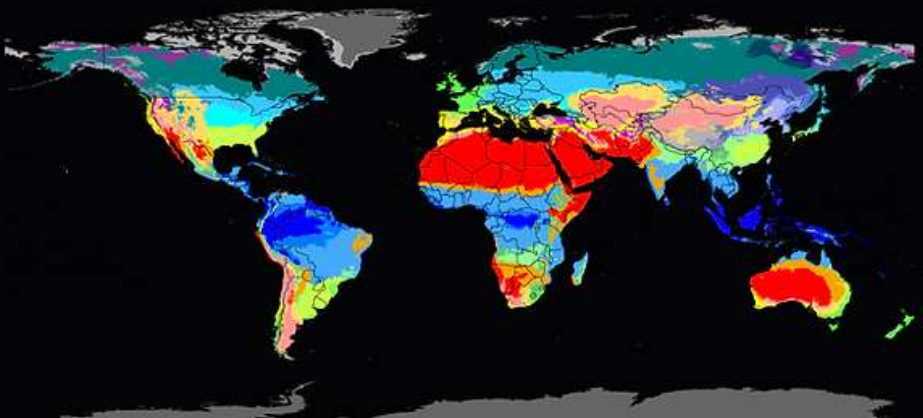
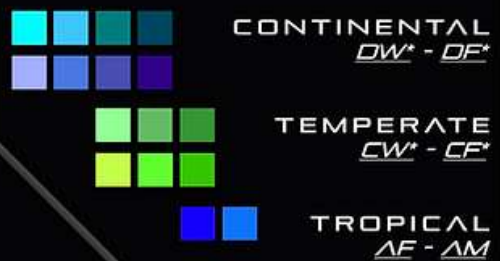


KÖPPEN-GEIGER

BIOMES CLIMATE CLASSIFICATION USE

YEAR ROUND

HIGH ADAPTABILITY



Transition is a **highly versatile** and adaptable jute-based pattern developed specifically for a mountain environment, whether it be woods or ridgetops.

This pattern accounts for habitat transitions during military operations or hunting expeditions. It is extremely effective at different latitudes.

The baseline is most effective in the woods and on high-altitude mountain ridges approximately 2000 meters above sea level.

Its use is most appropriate in coniferous forests, peatlands and high mountain valleys.

Its NIR reflectance is consistent with green vegetation and moss.

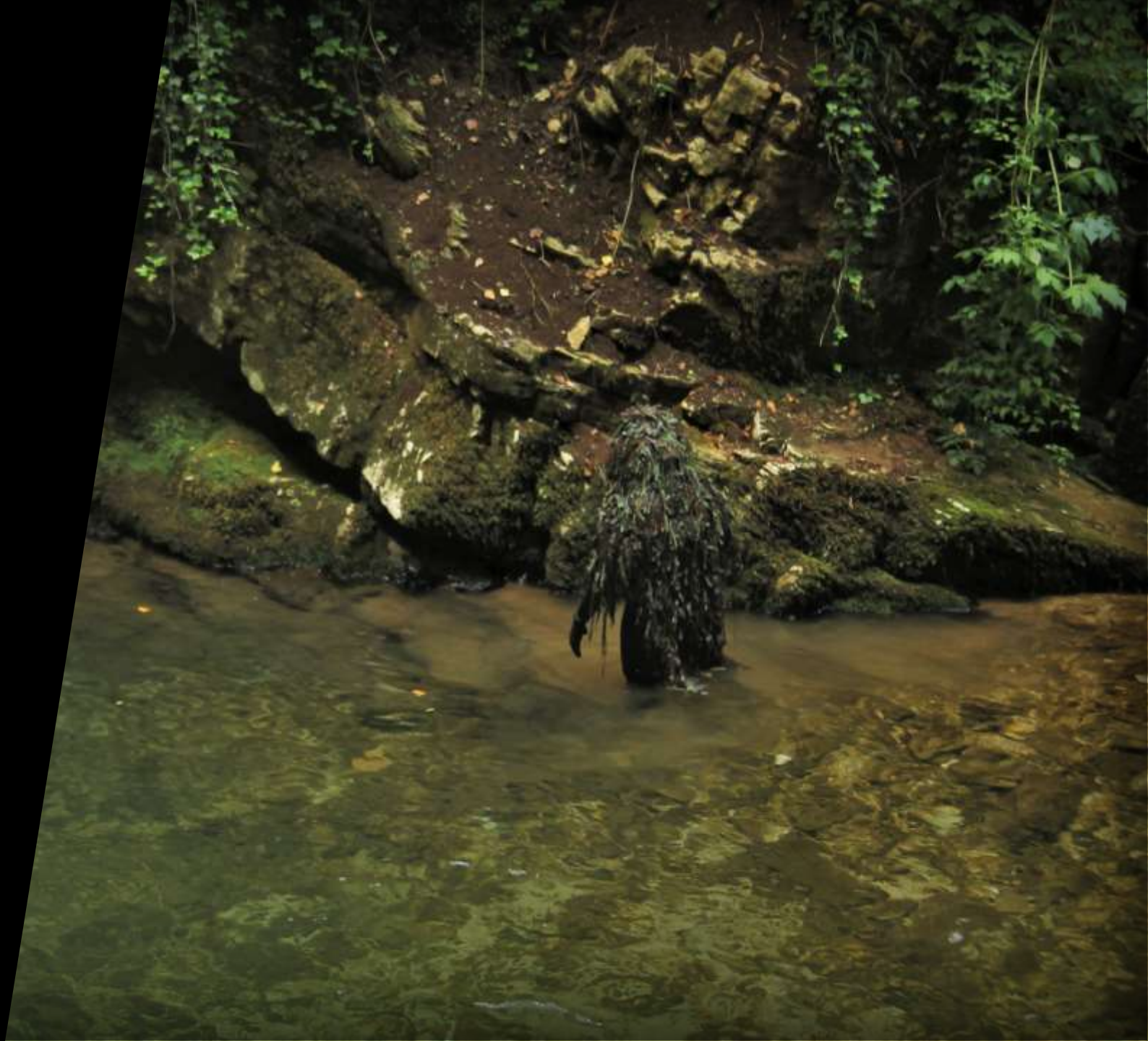


LAGOON



FROM TROPICAL TO CONTINENTAL ENVIRONMENTS

FULLY
WATERPROOF
BREATHABLE





PATTERN N.17

LAGOON

FULLY WATERPROOF AND BREATHABLE IR GHILLIE
(WIRC FABRIC + RAFIA)

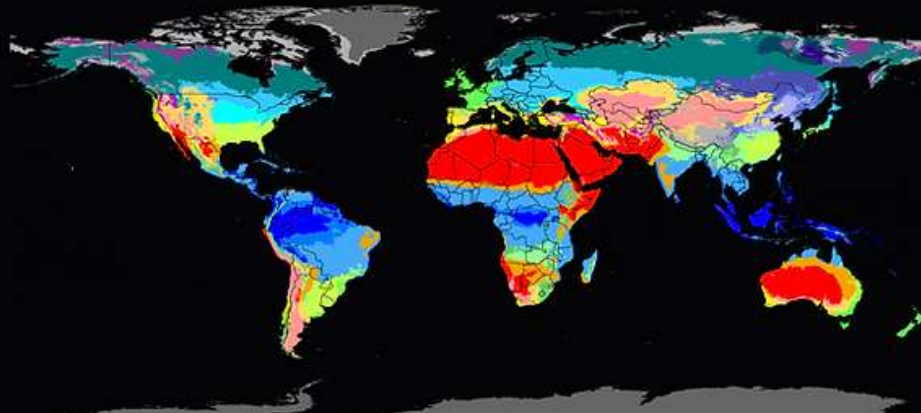
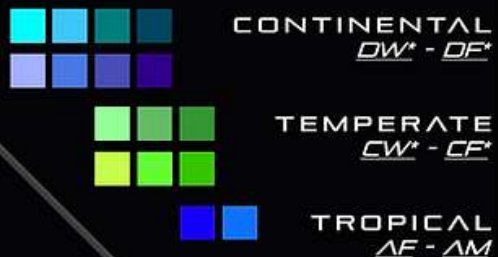


KÖPPEN-GEIGER

BIOMES CLIMATE CLASSIFICATION USE

WET AREAS

AMPHIBIOUS USE



Lagoon is a **versatile** pattern developed specifically for amphibious use. It is a fully waterproof and fully breathable multispectral IR Ghillie Suit designed for underwater and transitional operations where staying dry is required.

This pattern offers a proper baseline camouflage for both woods and mountain environments and for marine and lagoon areas. With this pattern, special forces operators can transit rapidly across environments, still maintaining shape disruption and the effectiveness of a Ghillie Suit.

It is extremely lightweight (700g Stalking-Hood + back extension) and it offers good reduction of thermal signature.

Its NIR reflectance is consistent with green vegetation.

BROAD-LEAVED

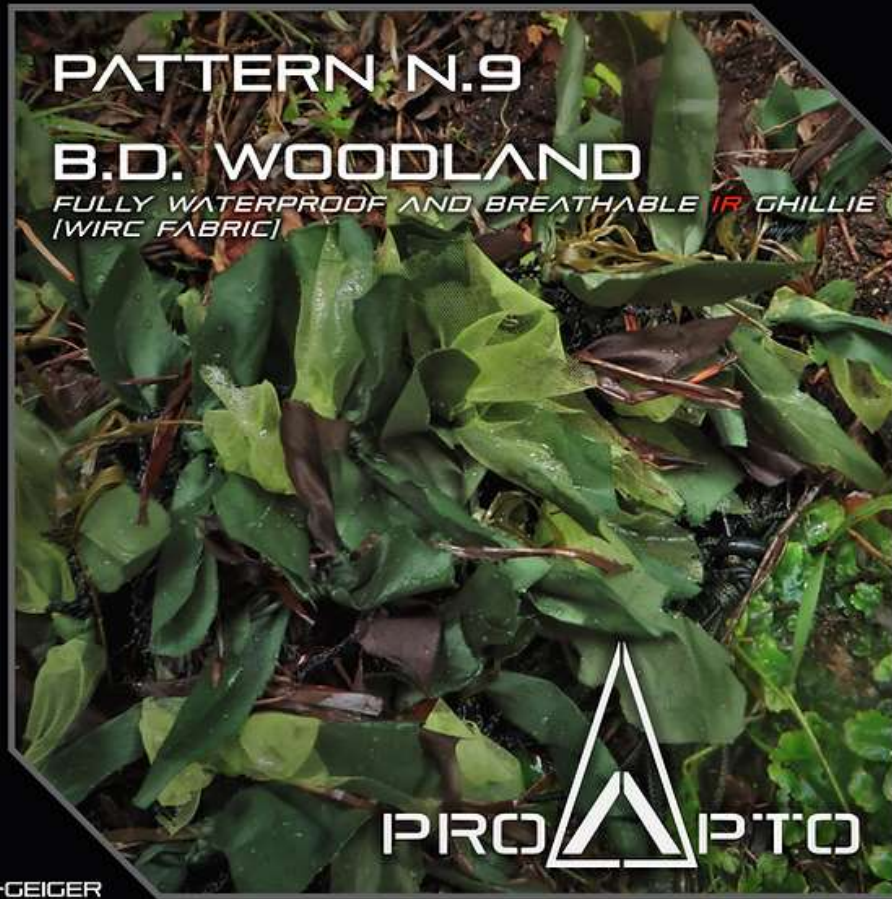




BROAD-LEAVED DECIDUOUS ENVIRONMENTS + URBAN



FULLY
WATERPROOF
BREATHABLE



PATTERN N.9

B.D. WOODLAND

FULLY WATERPROOF AND BREATHABLE IR GHILLIE
(WIRC FABRIC)

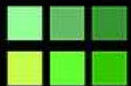


KÖPPEN-GEIGER

BIOMES CLIMATE CLASSIFICATION USE

DECIDUOUS

SPRING/SUMMER



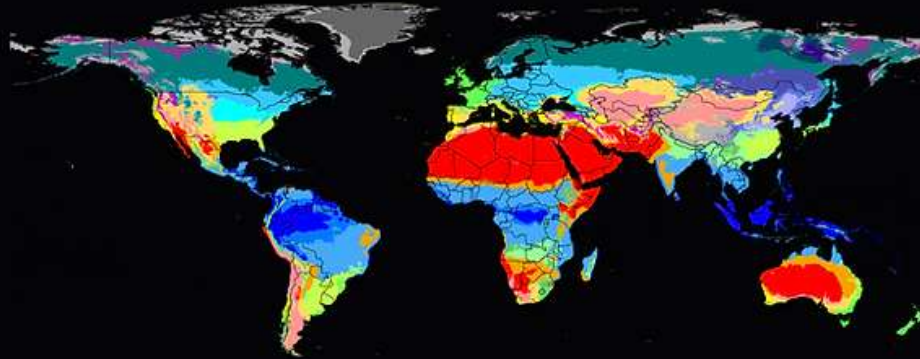
TEMPERATE
CW - CF**



CONTINENTAL
DW - DF**



TROPICAL
ΔF - ΔM - ΔW



Despite the fact that B.L. Woodland is a **highly specific** pattern designed for broad-leaved woodlands in the spring and summer months, the baseline also works extremely well during winter, thanks to the ivy and oak shades of WIRC fabric.

B.L. Woodland is a fully waterproof and breathable leafsuit, NIR-compliant under both active and passive IR systems. It's particularly lightweight: the Ghillie suit in the photo weighs 650 gr. A further advantage is its reduced propensity to getting caught in bushes and vegetation compared to cotton and mesh fabric, and its permanent 3D depth effect.

It is also effectively used in urban environment, around green areas and residential neighbourhoods for various activities...

Its NIR reflectance is consistent with green vegetation.



ARID

ARID



HOT-DRY / COLD-DRY ENVIRONMENTS



WINTER WOODS OR ROCKY DESERTS

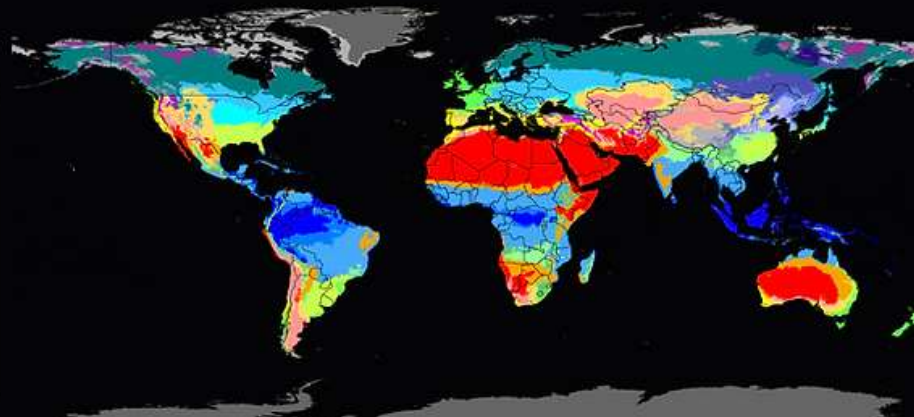


KÖPPEN-GEIGER

BIOMES CLIMATE CLASSIFICATION USE

GRASSY AREAS

ARID CLIMATES



The Arid pattern is a base pattern **specific** for arid and dry environments. The first version was developed with natural jute and shades of reddish sisal with addition of brown raffia. In a second instance, we came up with the raffia version, which is lighter and more breathable.

This version is more suitable for hot areas and seasons. Like the Greenzone pattern, the Ghillie is made in raffia, so it is highly breathable and does not retain water unlike many other materials and fabrics, therefore the use in hot and/or wet and rainy environment is suggested (for example, dry and cold autumns in continental climates or arid deserts in the Middle-East).

Its NIR reflectance is darker than green vegetation.

MULTIBIOME

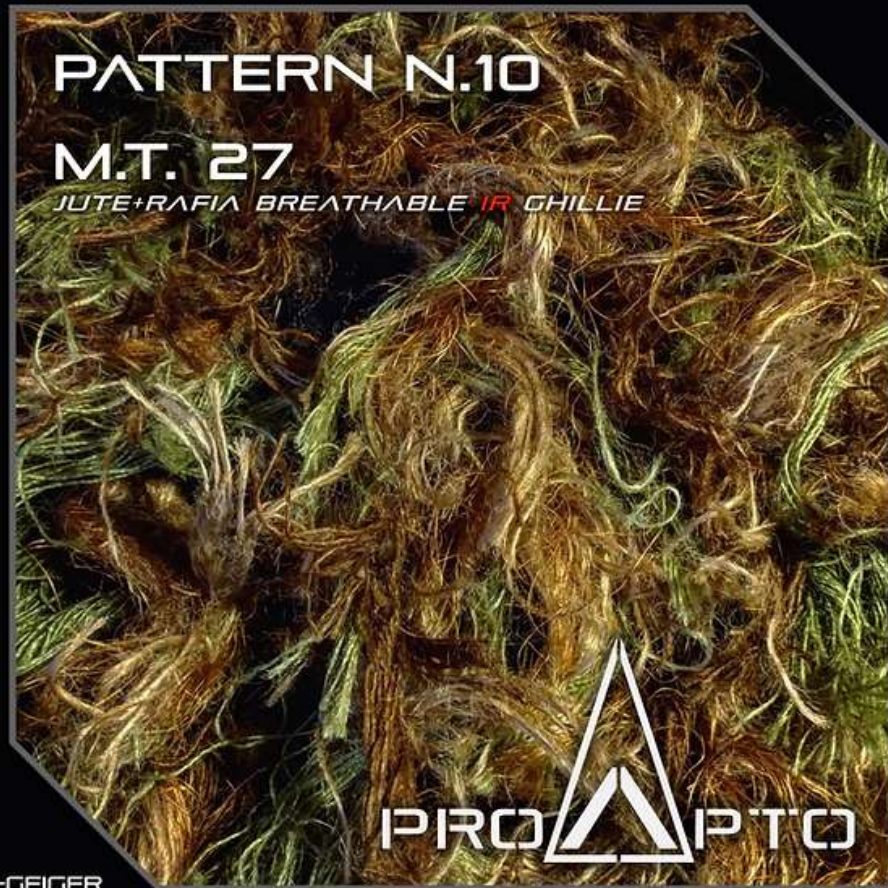




TEMPERATE AND CONTINENTAL ENVIRONMENTS

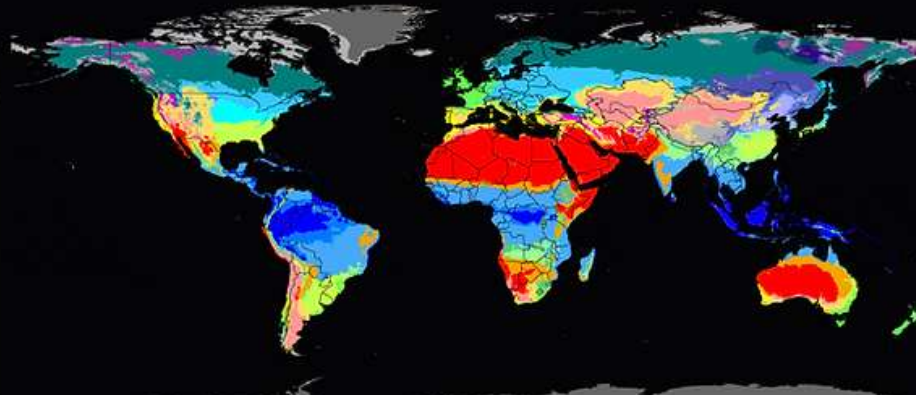


WHEN THE HIGHEST BASELINE ADAPTABILITY IS NEEDED



KÖPPEN-GEIGER

BIOMES CLIMATE CLASSIFICATION USE



Multibiome is a **highly versatile** and adaptable jute-based pattern. It is essentially a Multiland pattern featuring the mid-range brown of Transition, making it the intermediate option between Multiland (light) and Transition (dark).

Pattern Multibiome is composed of the three universal colours of natural camouflage: tan, mid-range brown and olive green.

It is designed for habitat transitions and for adaptability to several environments and seasons, making it a reliable, versatile choice for temperate environments.

Its NIR reflectance is between bare ground and green vegetation.

LATENS

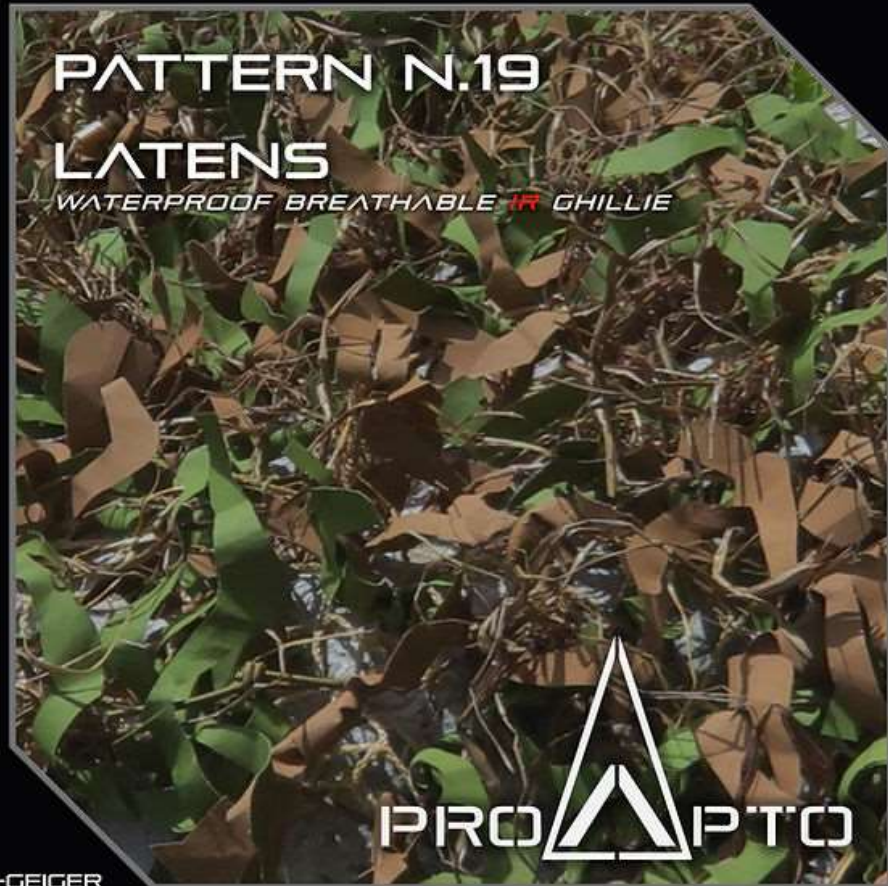




WHEN LOW WEIGHT AND WATERPROOFNESS ARE NEEDED



TEMPERATE AND CONTINENTAL ENVIRONMENTS



PATTERN N.19

LATENS

WATERPROOF BREATHABLE **IR** GHILLIE

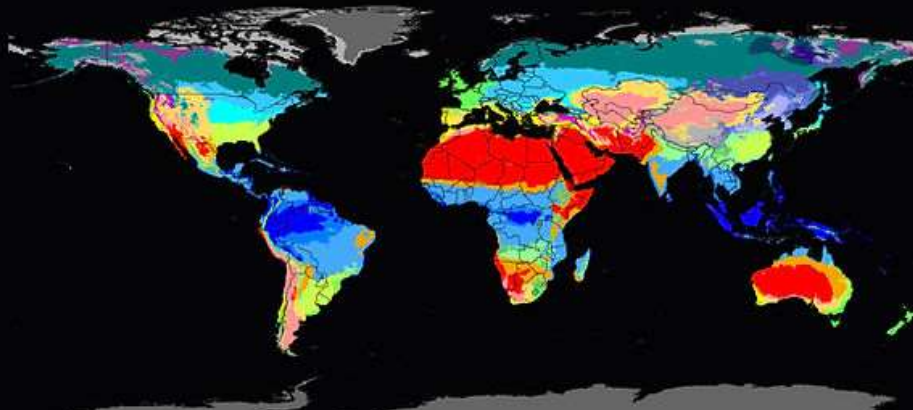
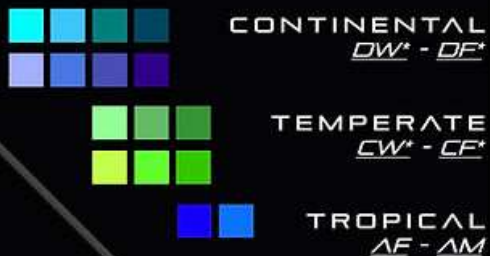


KÖPPEN-GEIGER

BIOMES CLIMATE CLASSIFICATION USE

MILITARY USE

WET AREAS



Pattern n.19 LATENS is a lightweight, highly breathable and waterproof VIS-NIR Ghillie developed primarily for military use.

It is based on a polyester alloy which guarantees 3D effect and greater resistance to weather elements. It can interact with other individual camouflage from other producers enhancing their effectiveness in the VIS, NIR and TIR spectrum.

In the same way it can be combined with our thermal camouflage and with thermal camouflage from other companies without affecting the mechanisms of action and adding 3D multispectral component while enabling to securely add vegetation to the system.

Its NIR reflectance is lower than green vegetation, it matches bark and bare ground.

BELLICUS

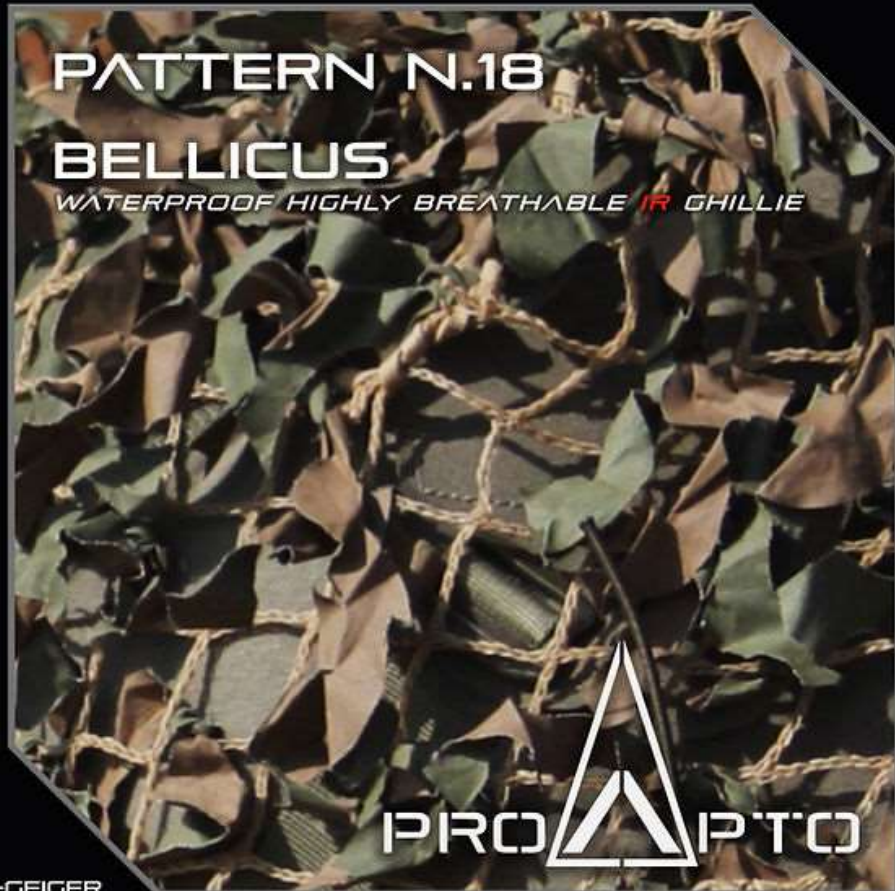




HOT-DRY / COLD-DRY / DESERTIC ENVIRONMENTS + URBAN



A LIGHTWEIGHT SYSTEM FOR HYBRID AND ASYMMETRICAL USES



KÖPPEN-GEIGER

BIOMES CLIMATE CLASSIFICATION USE

MILITARY USE

DRY AREAS



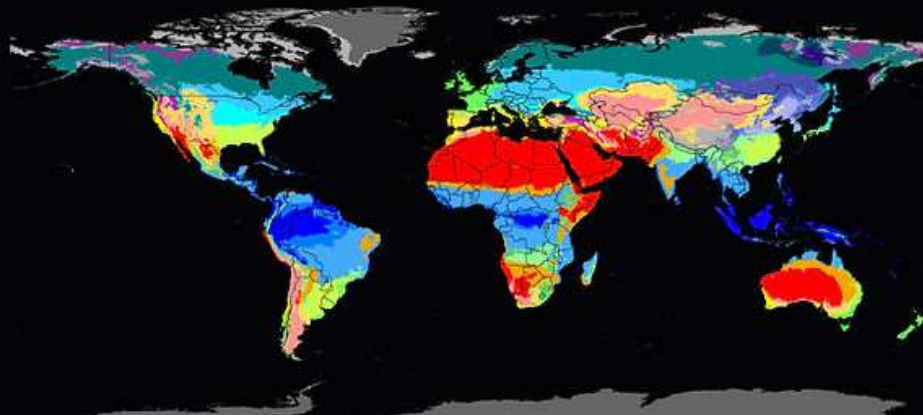
DRY
BW - BS**



CONTINENTAL
*DS**



TEMPERATE
CSA - CSB



Pattern n.18 BELLICUS is our version of the Crye Assault Ghillie with an improved concept of versatility and durability.

Pattern n.18 is a lightweight, highly breathable and waterproof VIS-NIR Ghillie developed primarily for military use. It is based on a polyester alloy which guarantees 3D effect and greater resistance to weather elements.

It can be combined with our thermal camouflage and with thermal camouflage from other companies without affecting the mechanisms of action and adding 3D multispectral component while enabling to securely add vegetation to the system.

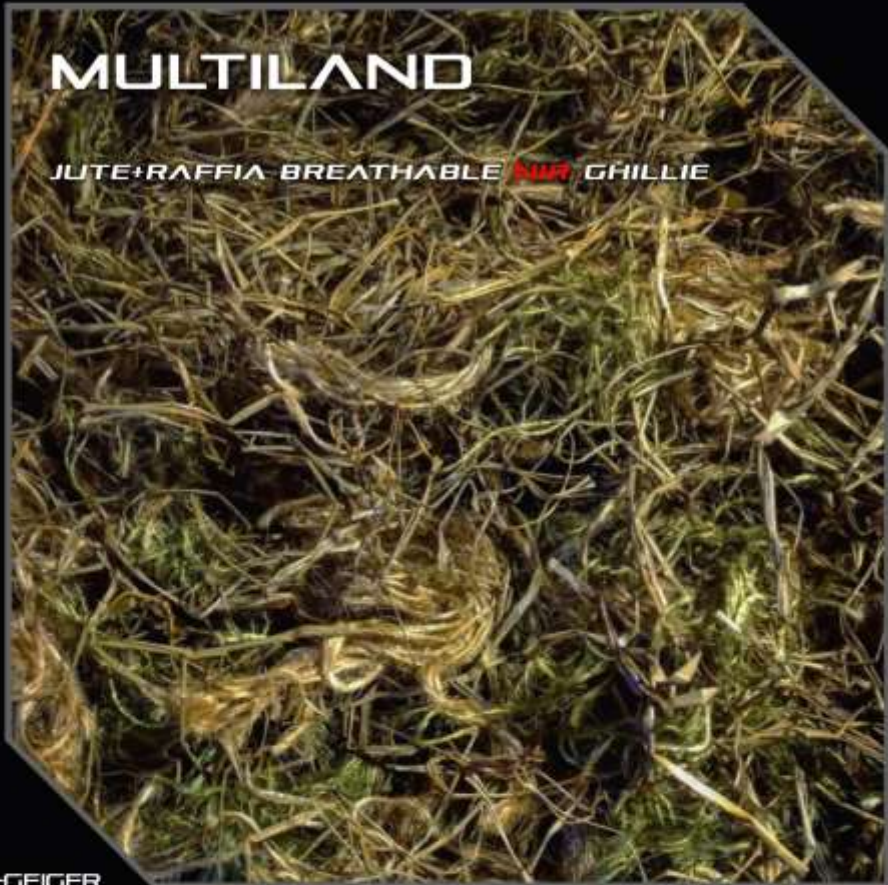
Its NIR reflectance is lower than green vegetation, it matches bark and bare ground

A dense forest scene with a fallen tree trunk in the foreground and sunlight filtering through the trees. The text "OTHER STANDARDIZED GHILLIE PATTERNS" is overlaid in white, spaced-out capital letters across the center of the image.

OTHER STANDARDIZED GHILLIE PATTERNS

MULTILAND

JUTE+RAFFIA BREATHABLE **AWR** GHILLIE



This highly *versatile* pattern is suited for several environment types, from arid fields to wooded and mountainous areas, and adapts well to every season.

In rich green surroundings, achieving a good degree of concealment will require the addition of a fair amount of mud or vegetation, particularly in the Northern hemisphere, where the baseline is most exposed.

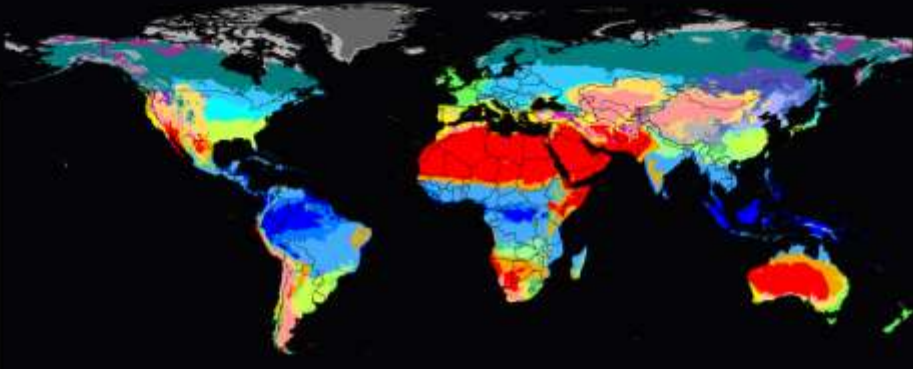
Multiland is best suited for temperate and arid environments. It is based on jute and raffia but a full raffia version is available on demand.

KÖPPEN-GEIGER

BIOMES CLIMATE CLASSIFICATION USE

YEAR ROUND

HIGH ADAPTABILITY





SNOW

FULLY WATERPROOF AND BREATHABLE
WIRC GHILLIE (WIRC FABRIC)

KÖPPEN-GEIGER

BIOMES CLIMATE CLASSIFICATION USE

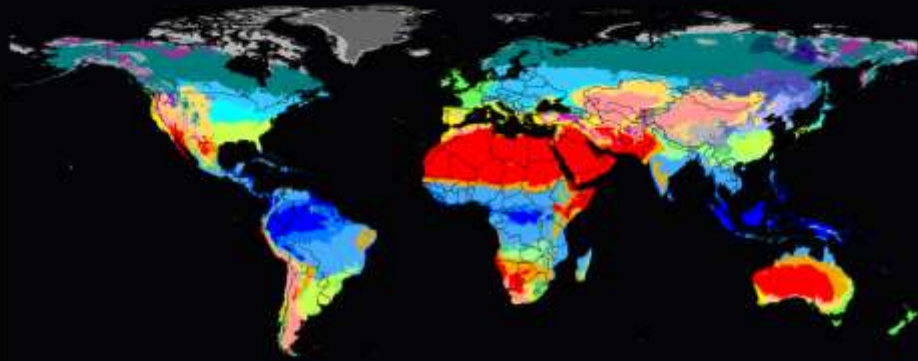
SNOWY AREAS

ALPINE USE



POLAR
ET - EF

WINTER CONTINENTAL DW¹ - DF²



This pattern is **highly specific**, designed with snowy, alpine and arctic regions in mind. It is fully waterproof and breathable and does not feature either jute nor raffia, as these fibres tend to dampen and freeze in icy temperatures, increasing the Ghillie suit's weight. Even so, the Snow pattern can be integrated with any of our camouflage fibres.

Pattern Two-colours Snow is a variation of this pattern, with added green WIRC fabric, in order to blend in patchy snowy areas and snowy woods. These Ghillie patterns disrupt the human silhouette on white backdrops and snowy ridges.

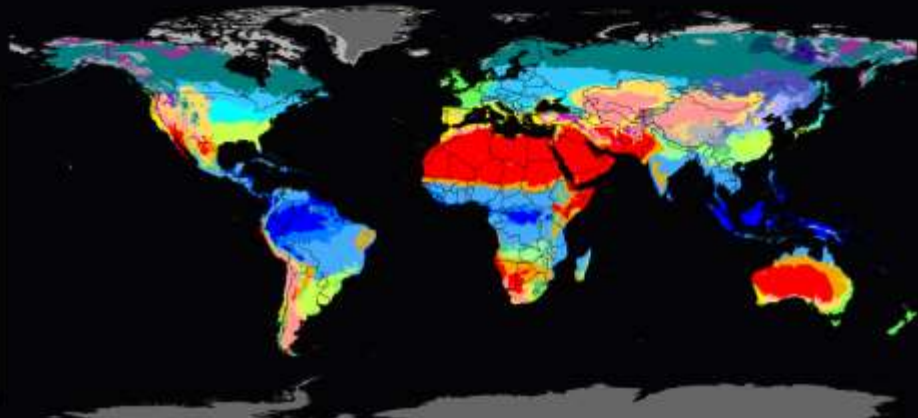


KÖPPEN-GEIGER

BIOMES CLIMATE CLASSIFICATION USE

DECIDUOUS

AUTUMN/WINTER



Realtree Xtra is a **highly specific** pattern ideal for broad-leaved woods, particularly during the autumn and winter seasons.

It's made of strips of Realtree Xtra waterproof fabric, with added wide strands of raffia that perfectly reproduce the typical mid-range colour of autumn foliage.

Realtree is popular with deer and turkey hunters for its waterproof properties and stronger odour-resistance compared to jute or raffia.



A p t o q u a d e a m a d n a t u r a m

NIR EFFECTIVENESS

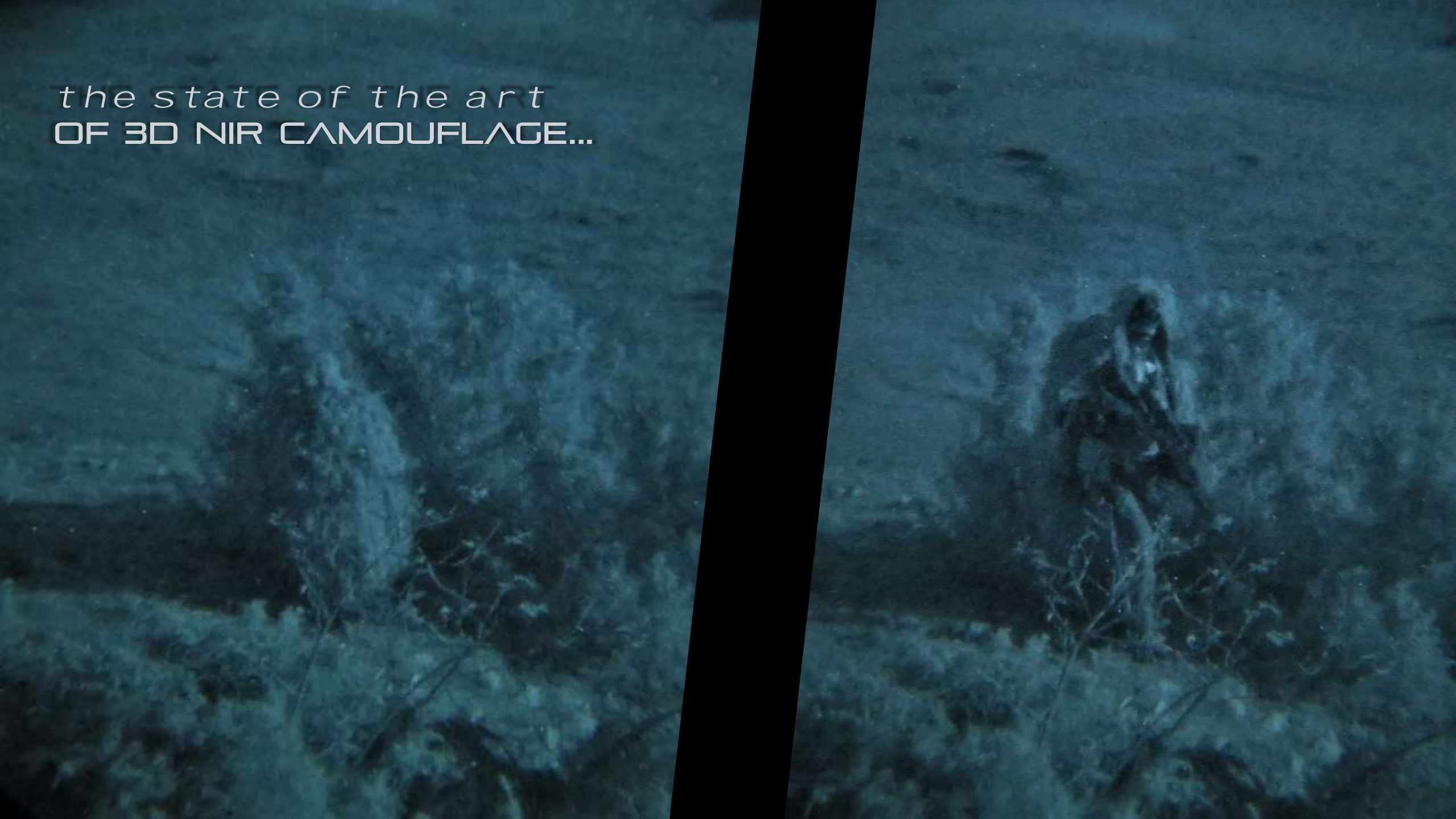
A person wearing a white shirt and dark shorts is kneeling in a field of tall, dense grass. They are holding a handheld device, likely a spectrometer, and pointing it towards the ground. The scene is captured in a monochromatic blue-green color scheme. The text "Jute based patterns Nir effectiveness" is overlaid at the bottom of the image.

Jute based patterns Nir effectiveness

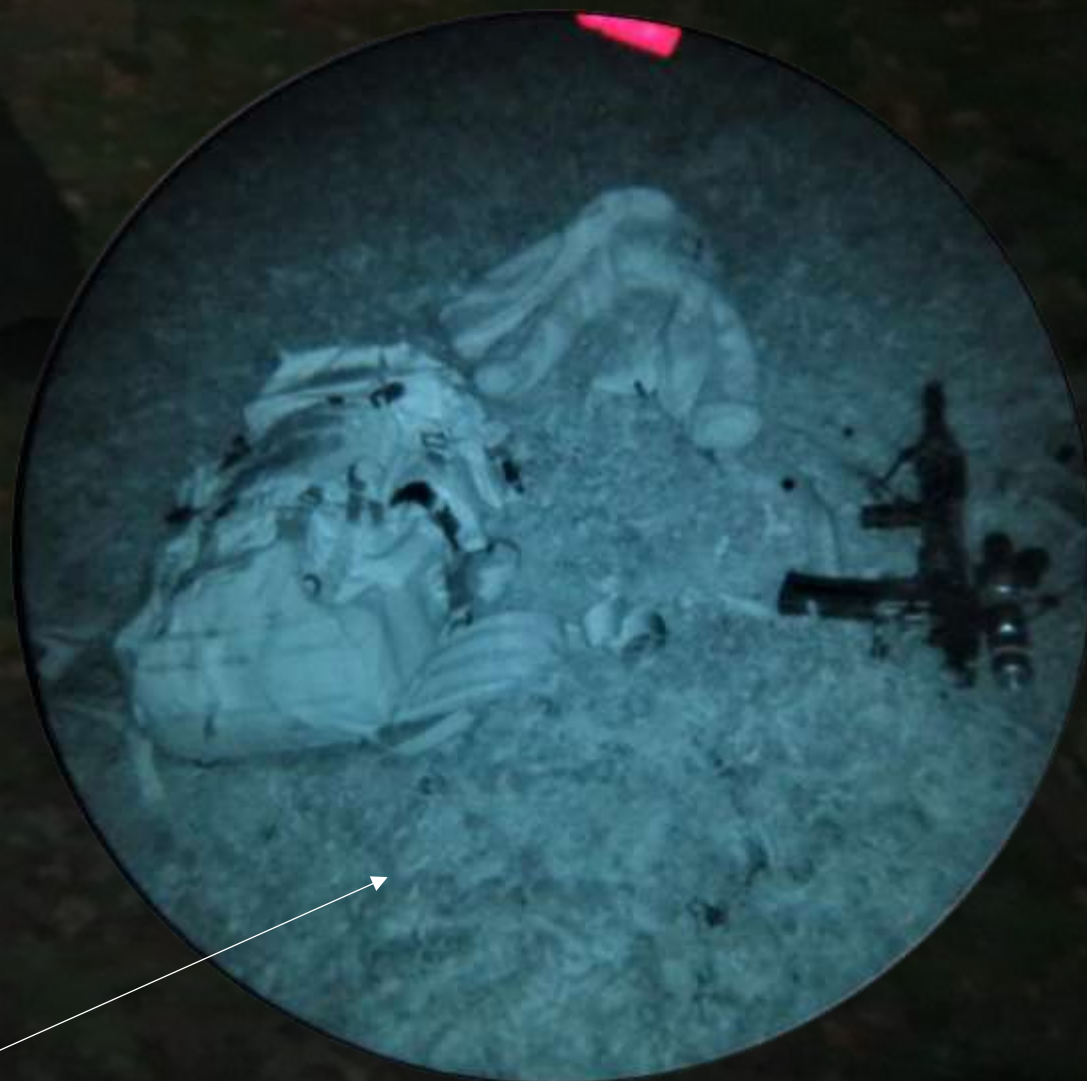


Jute based patterns Nir effectiveness

the state of the art
OF 3D NIR CAMOUFLAGE...



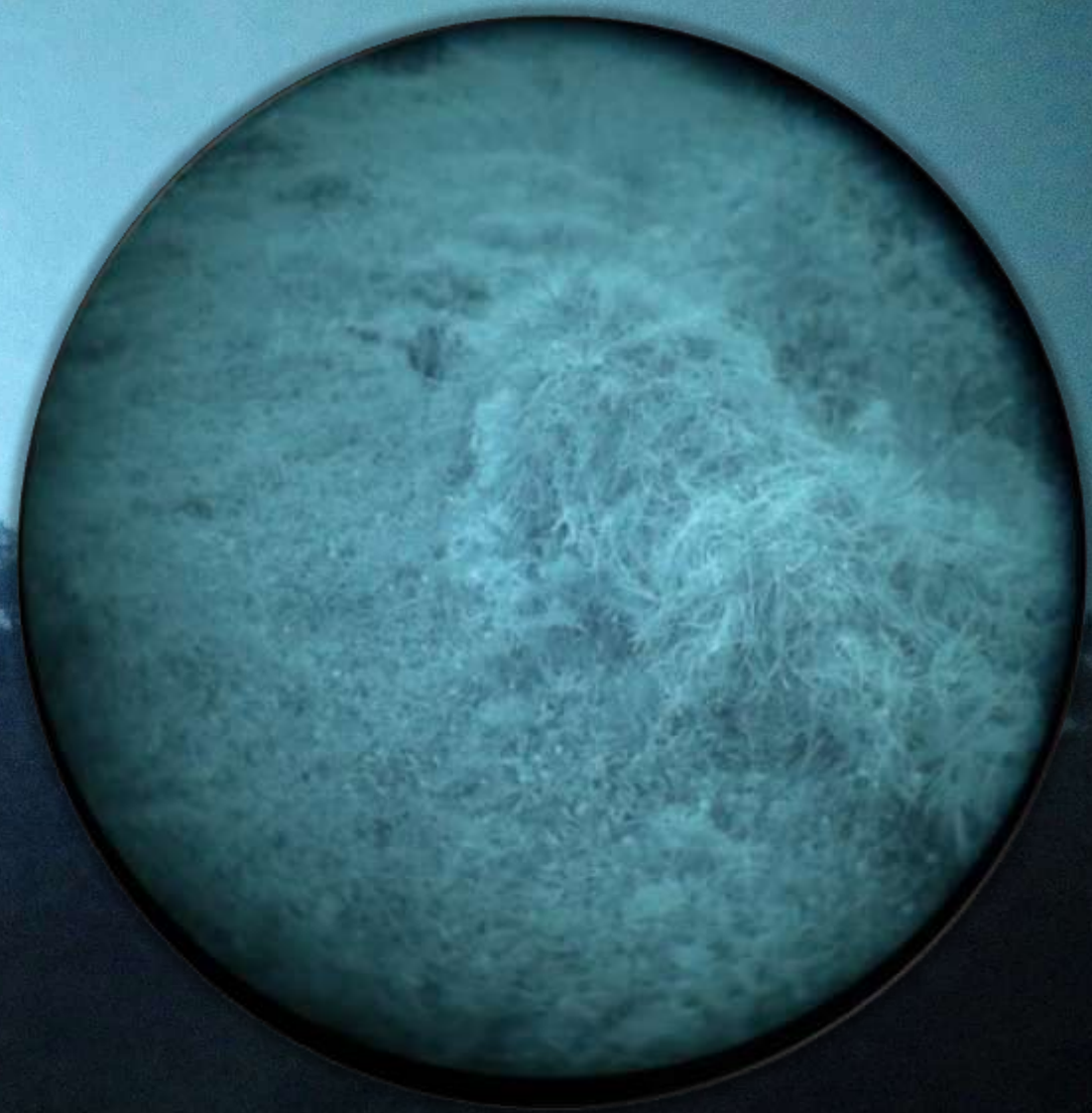
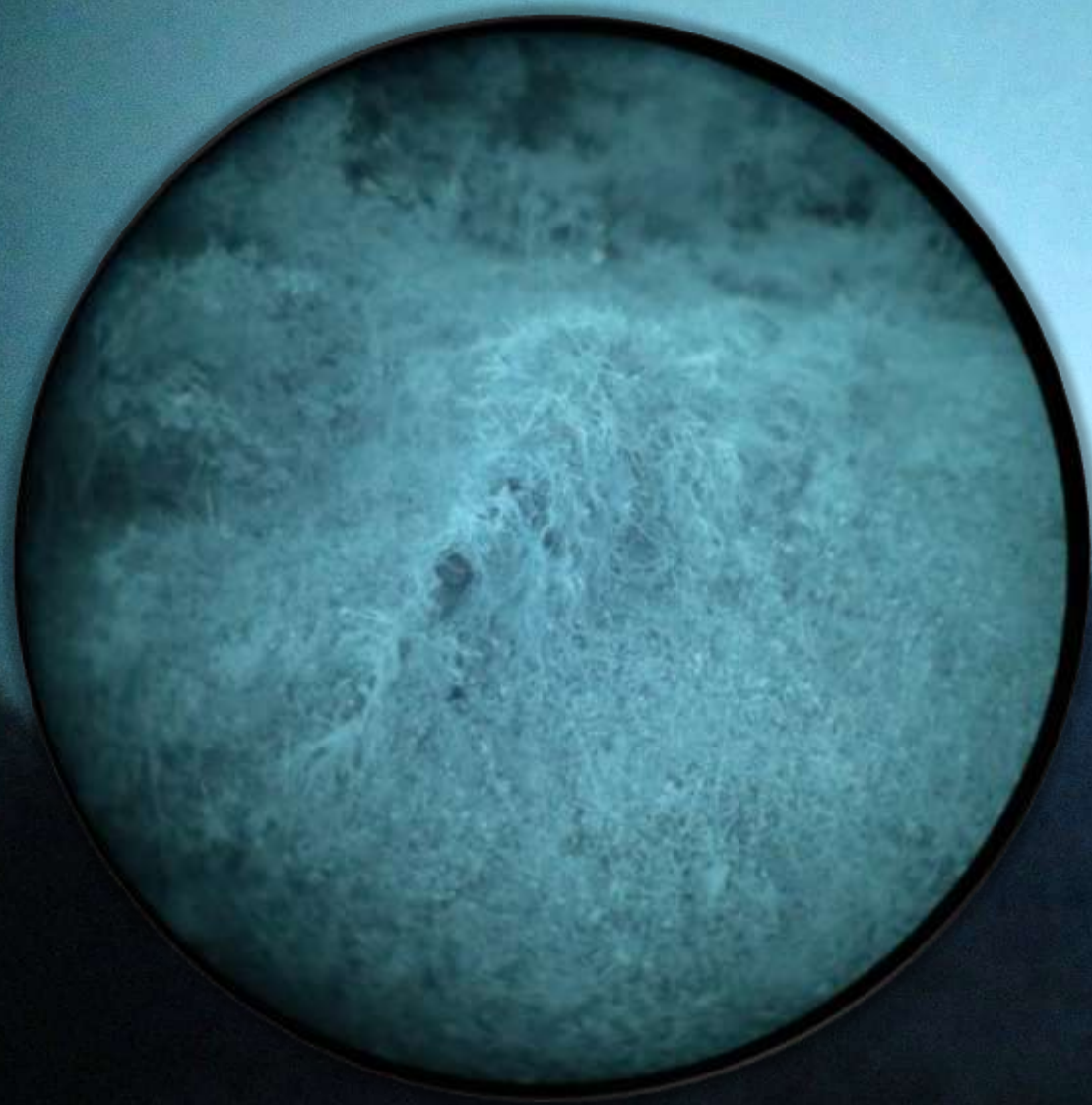
IR illuminator



Jute based pattern



traffia based patterns *Nir* effectiveness



r a f f i a b a s e d p a t t e r n s Nir e f f e c t i v e n e s s



*Poly based patterns **Nir** effectiveness*



*Poly based patterns **Nir** effectiveness*



*Poly based patterns **Nir** effectiveness*

IR illuminator



Poly based patterns *Nir* effectiveness



2D CAMOUFLAGE PATTERNS

SCALABLE PATTERNS

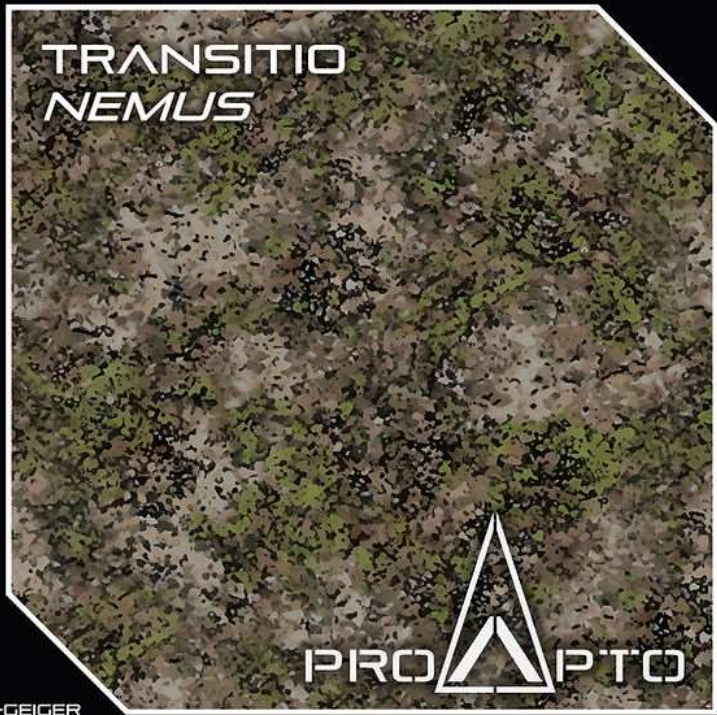
Our 2D patterns are an additional option to the oversaturated field of 2D camo design. Our 2D patterns cover the vast majority of the Biomes of the Globe and at the moment are divided in 2 main families: Transitio and Exitium. Our 2D patterns are designed to disrupt the human body, but they can be scaled to cover objects, vehicles and buildings. Our 2D patterns are designed to synergically work together on macro scales (vehicles/building), namely, patterns of the same family can be composed to create a meta-macro pattern.



TRANSITIO

The Transito family (from Ancient Latin meaning "transition" -transitio, transitōnis) is designed to be used in nature away from human artifacts and is both suitable for military and hunting/photography. It includes a total of 7 camo patterns.



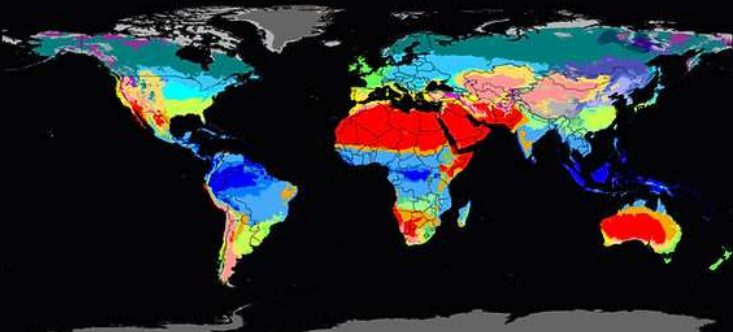
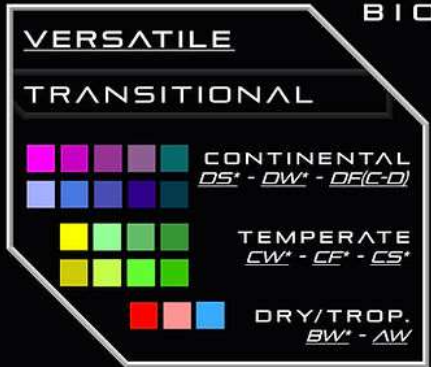
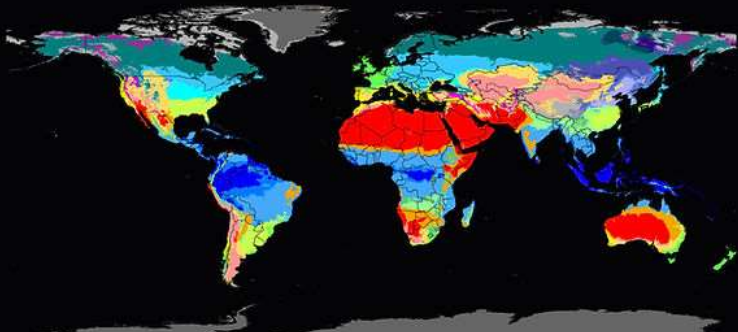
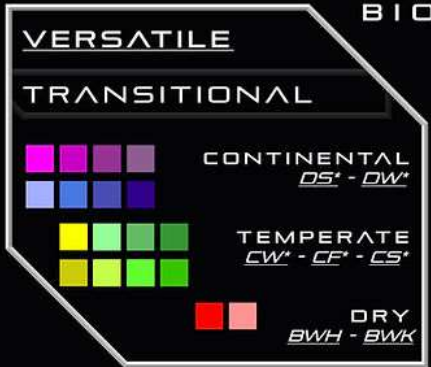


KÖPPEN-GEIGER

KÖPPEN-GEIGER

BIOMES CLIMATE CLASSIFICATION USE

BIOMES CLIMATE CLASSIFICATION USE





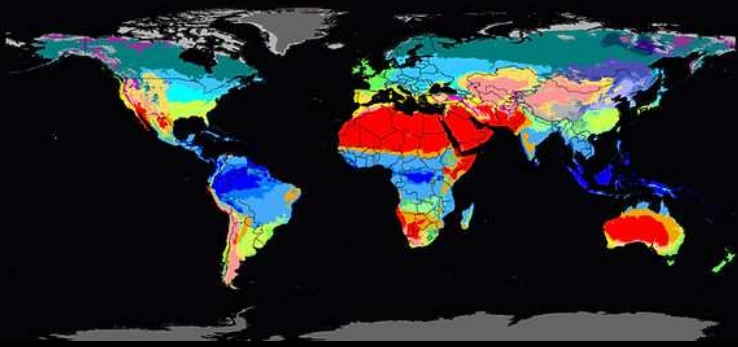
KÖPPEN-GEIGER

BIOMES CLIMATE CLASSIFICATION USE

VERSATILE

TRANSITIONAL

	CONTINENTAL <i>DW' - DF'</i>
	TEMPERATE <i>CW' - CF'</i>
	TROPICAL <i>AF - AM</i>



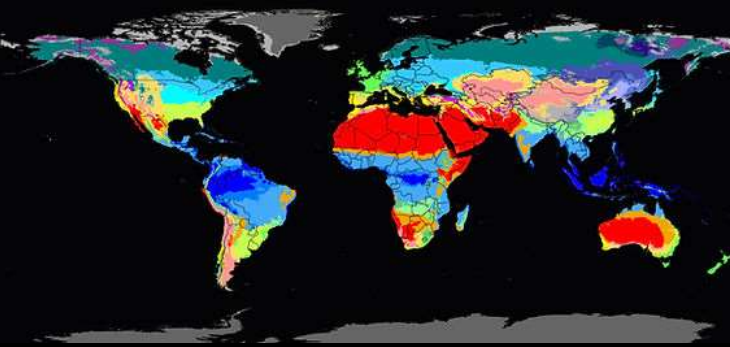
KÖPPEN-GEIGER

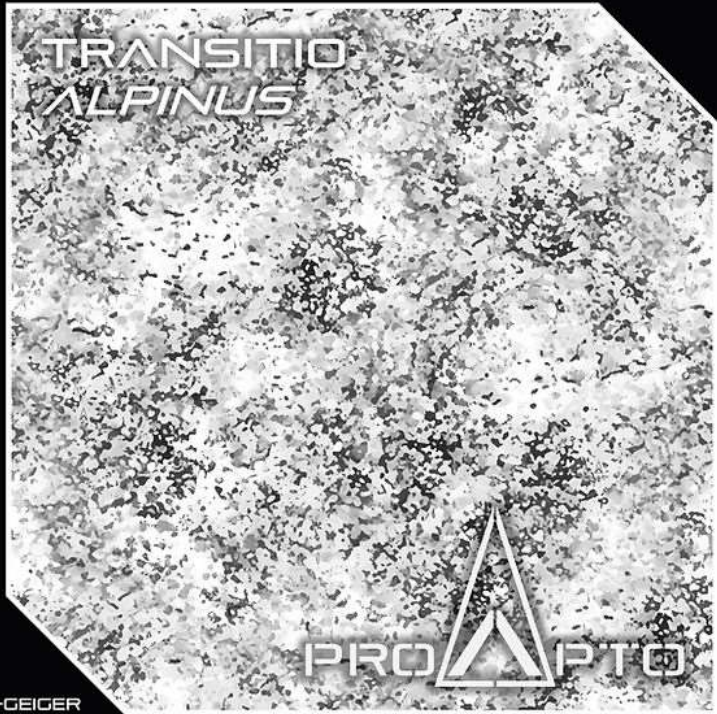
BIOMES CLIMATE CLASSIFICATION USE

VERSATILE

TRANSITIONAL

	DRY/TROPICAL <i>BW' - BS' - AW</i>
	CONTINENTAL <i>DS'</i>
	TEMPERATE <i>CSA - CSB</i>



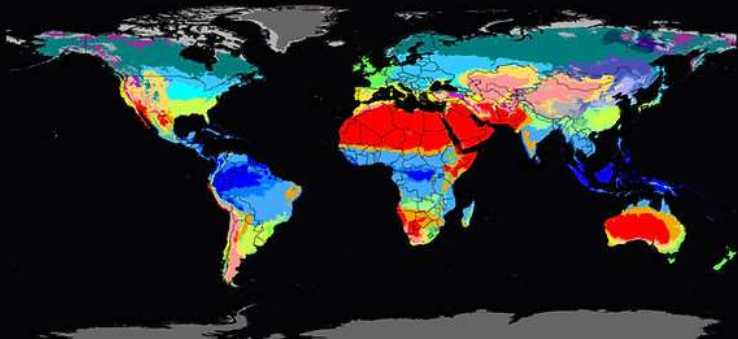


KÖPPEN-GEIGER

BIOMES CLIMATE CLASSIFICATION USE

SPECIFIC
ALPINE USE

■	POLAR
■	ET - EF
WINTER CONTINENTAL	
■ ■ ■ ■	DW* - DF*
■ ■ ■ ■	

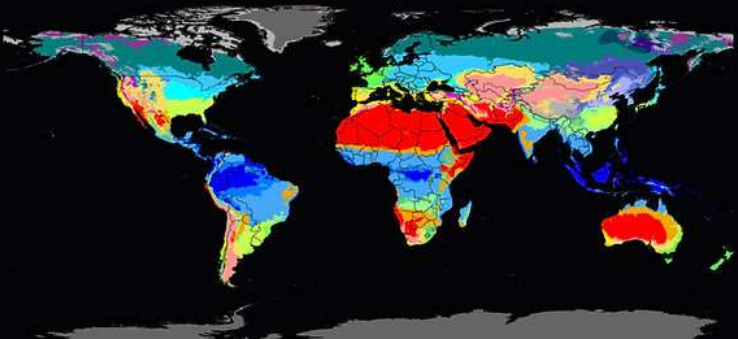


KÖPPEN-GEIGER

BIOMES CLIMATE CLASSIFICATION USE

SPECIFIC
URBAN USE

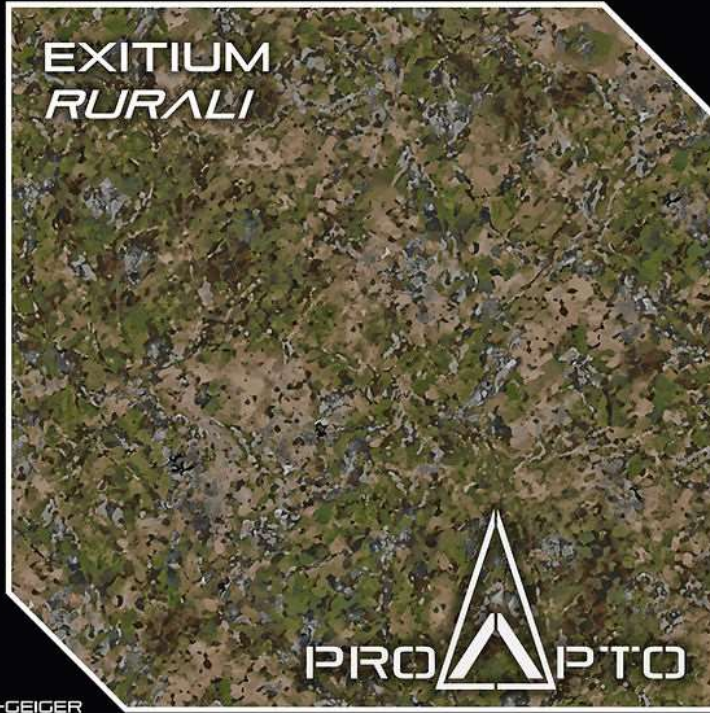
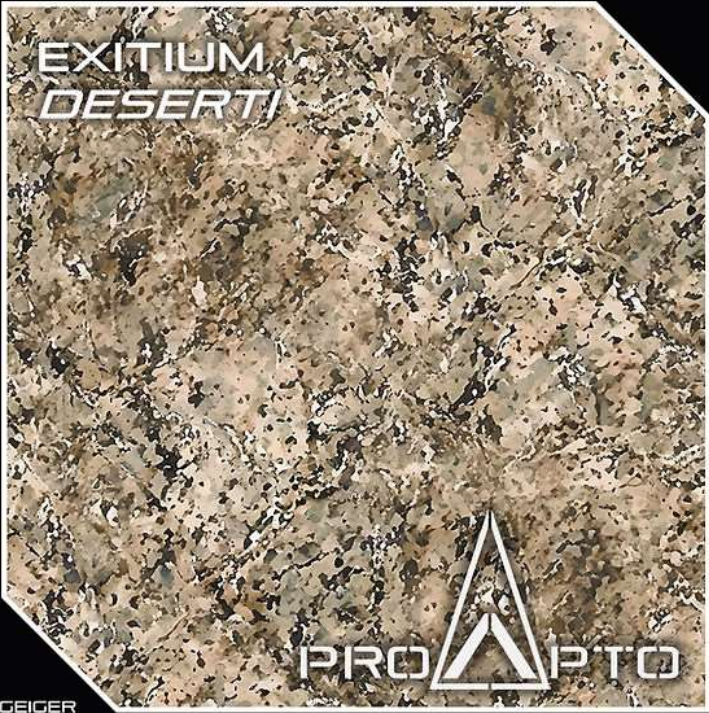
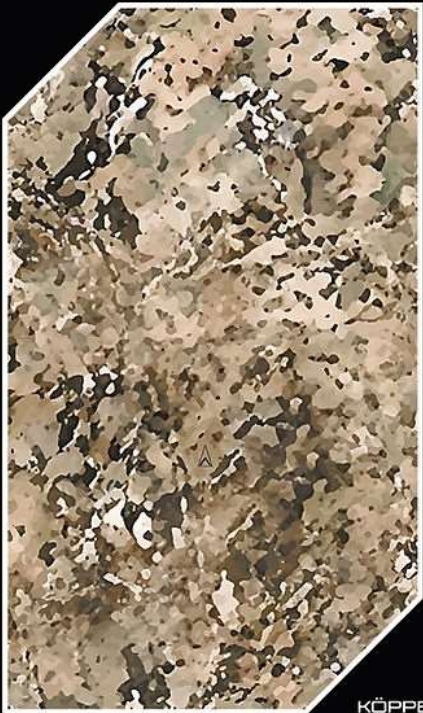
■ ■	POLAR
■ ■	ET - EF
■ ■ ■ ■ ■ ■ ■ ■ ■ ■	CONT./TEMP.
■ ■ ■ ■ ■ ■ ■ ■ ■ ■	DS* - DF(C-D) - CW*
■ ■ ■ ■ ■ ■ ■ ■ ■ ■	DRY/TROP.
■ ■ ■ ■ ■ ■ ■ ■ ■ ■	BW* - AW



EXITIUM

The Exitium family (from Ancient Latin meaning "doom/destruction/ruin/death" - exitium, exitii) is designed to be used in war scenarios/aftermath and in regions with human artifacts.

It includes a total of 11 camo patterns.

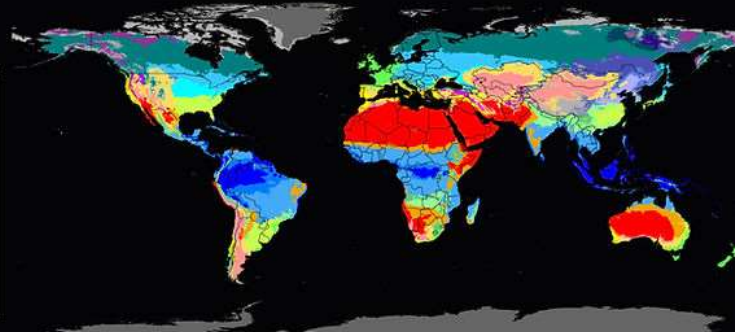
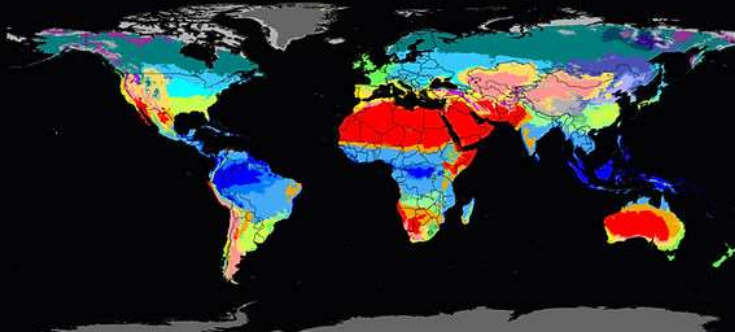
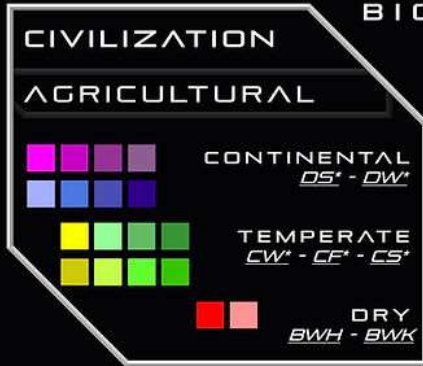


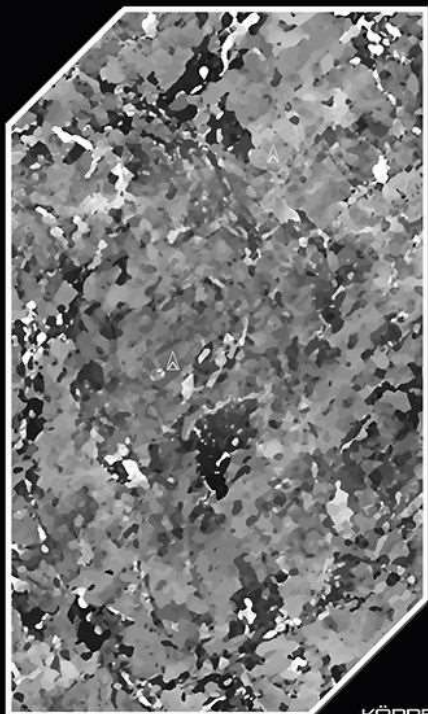
KÖPPEN-GEIGER

KÖPPEN-GEIGER

BIOMES CLIMATE CLASSIFICATION USE

BIOMES CLIMATE CLASSIFICATION USE



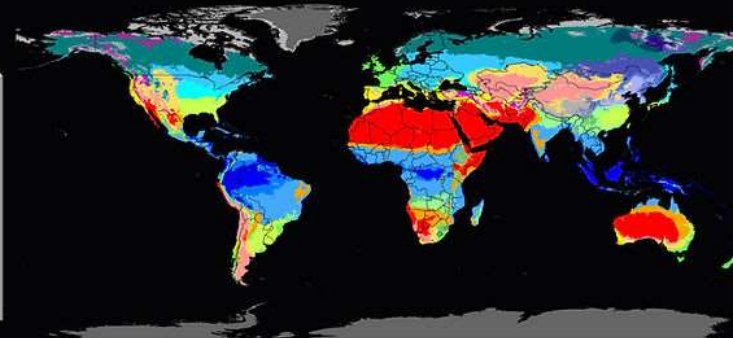
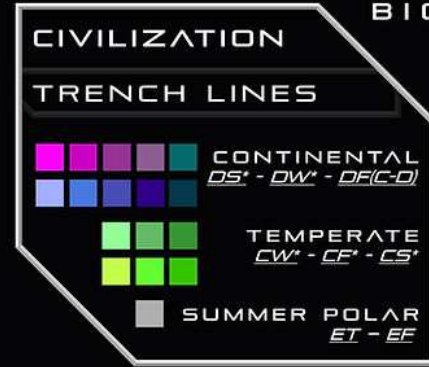
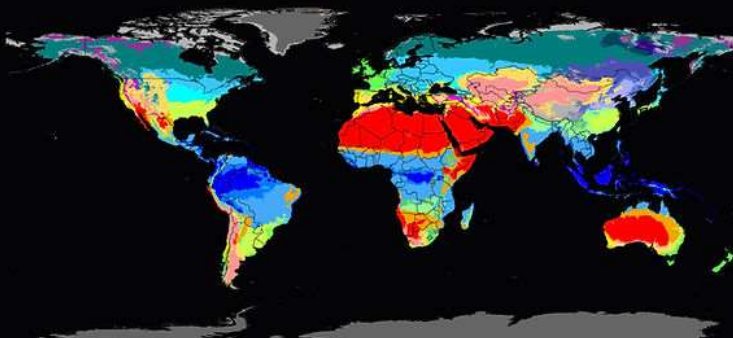


KÖPPEN-GEIGER

KÖPPEN-GEIGER

BIOMES CLIMATE CLASSIFICATION USE

BIOMES CLIMATE CLASSIFICATION USE





KÖPPEN-GEIGER

KÖPPEN-GEIGER

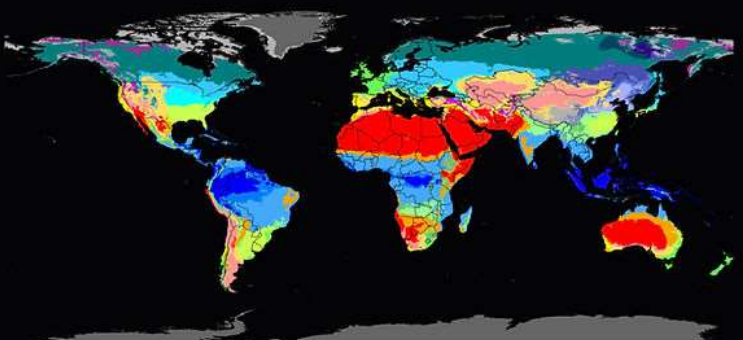
BIOMES CLIMATE CLASSIFICATION USE

BIOMES CLIMATE CLASSIFICATION USE

CIVILIZATION

WAR DEBRIS

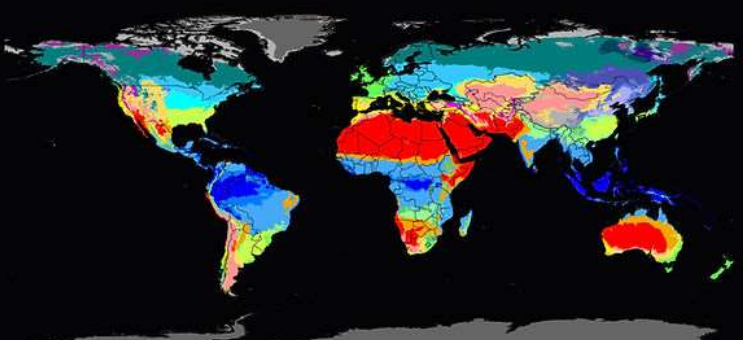
	CONTINENTAL <i>DS* - DW* - DFC-D</i>
	TEMPERATE <i>CW* - CF* - CS*</i>
	DRY/TROP. <i>BW* - AW</i>

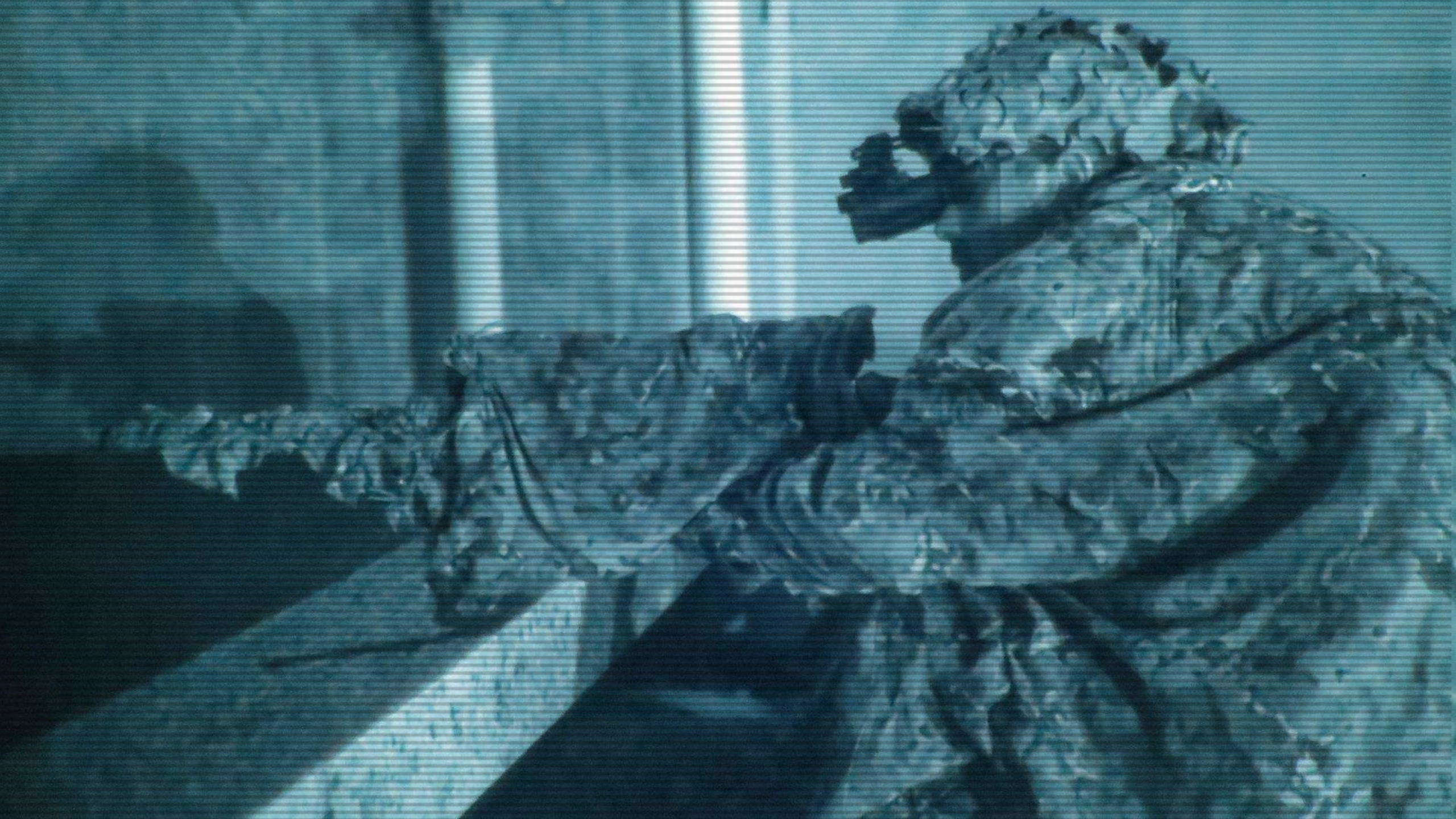


CIVILIZATION

SNOWY AREAS

	POLAR <i>ET - EF</i>
	WINTER CONTINENTAL <i>DW* - DF*</i>







About proapto and its network

ProApto is a registered Italian trademark founded in 2015, and its personnel comprises neuroscientists, software engineers, graphic designers, former military officers, and uniquely trained artisans who are the driving force behind its innovative products. In 2023, ProApto patented individual multispectral camouflage across over 30 countries. ProApto is the first company to develop standardized three-dimensional camouflage patterns based on the Köppen and Geiger climate classification. Currently, ProApto offers 12 3D camouflage patterns and 18 2D camouflage patterns covering all biomes worldwide. ProApto is commercialised by Synaptron (<https://synaptron.it/en/>).

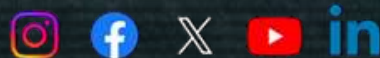
Email: orders@proapto-camouflage.com / ProApto@proton.me

Website: <https://www.proapto-camouflage.com/about-us>

Youtube: <https://www.youtube.com/@ProApto/>



synaptron
the future, now.





Arma corpori apto