

ABOUT PROAPTO

ProApto is an Italian-rooted brand established in 2015 in Rome. ProApto's personnel comprises neuroscientists, software engineers, graphic designers, former military officers and uniquely trained artisans who are the driving force behind ProApto camouflage systems. ProApto is commercialized worldwide by Synaptron. Contact us through our website for orders and collaborations.



PRODUCT OVERVIEW

ProApto is an Italian-rooted company providing the widest worldwide selection of individual multispectral camouflage (VIS-NIR-TIR), ranging from 3D Ghillie suits to 2D counter-thermal solutions. ProApto currently provides the following solutions:

9 GHILLIE MODELS

Multipurpose, versatile Ghillie suit designs providing high breathability, low weight and unpaired modularity and adaptability in any environment and weather.

12 3D PATTERNS

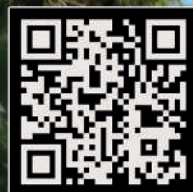
3D Ghillie camouflage patterns covering all biomes of the globe, employing both natural fibers and synthetic alloys for any operational needs, from underwater to alpine uses.

6 ANTI-THERMAL SUITS

Thermal camouflage (2D/3D) soldier systems to ensure adequate counter-measures against the increasing proliferation of hand and rifle mounted thermal sensors, UAS and drone warfare.

18 2D PATTERNS

Multispectral camouflage can be produced in 18 different proprietary camouflage designs. In total, ProApto offers over 100 3D Ghillie suit options and over 90 thermal camouflage systems.





3D PATTERNS

ProApto Ghillie suits can be produced in 12 different 3D standardised camouflage patterns designed for all biomes of the globe.

ProApto offers the widest choice of Ghillie camouflage worldwide. The 3D VIS-NIR camouflage patterns range from natural fibers like jute and raffia to waterproof and fire-retardant plastic alloys.



THERMAL CAMO

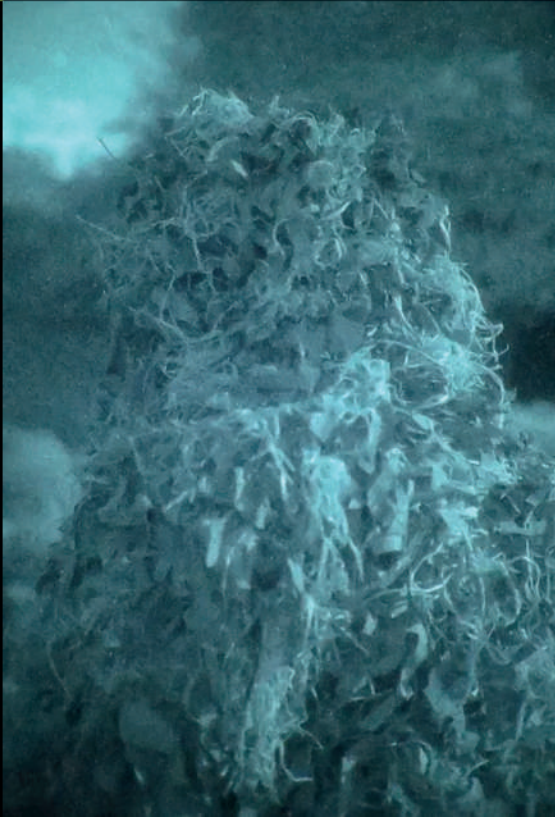
ProApto counter-thermal camouflage provides VIS, NIR and TIR simultaneous camouflage, maximising operators' survivability. The key features are:

- > lightweight and packable;
- > breathable, non-insulating;
- > extremely silent;
- > modular and multipurpose;
- > amphibious and washable with no decay in camouflage.

GHILLIE SUITS

All ProApto Ghillie suits provide high 3D camouflage effectiveness (VIS and NIR) within and beyond the intended environment of use. The Ghillie systems provide:

- > versatility and modularity;
- > high breathability;
- > waterproof base;
- > high longevity;
- > possibility to apply vegetation in any part.



2D PATTERNS

ProApto 2D patterns are designed to hide the human body, but they can be scaled to cover objects, vehicles and buildings. Licensing is available with high-res vectorial rendering.

The 18 proprietary 2D camouflage designs are used for ProApto's individual multispectral camouflage products to hide the soldier in all possible environments.

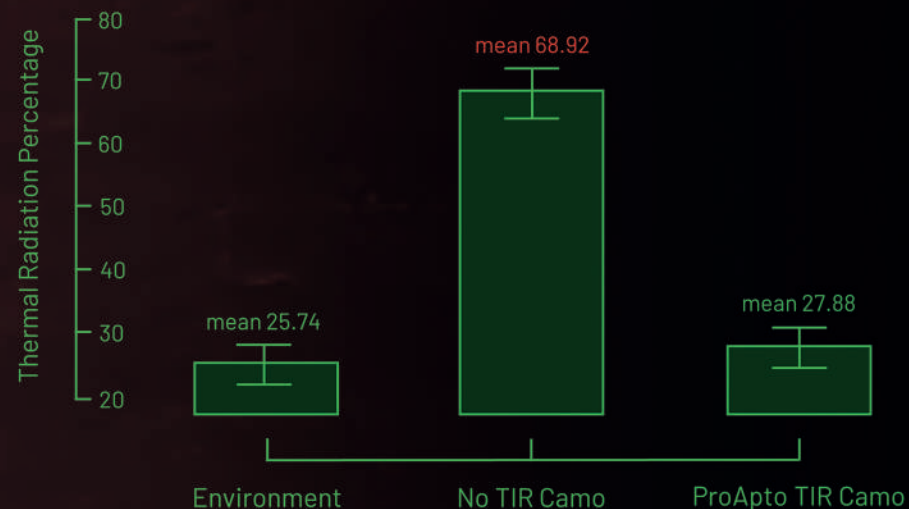


ABOUT PROAPTO

ProApto is an Italian-rooted brand established in 2015 in Rome. ProApto's personnel comprises neuroscientists, software engineers, graphic designers, former military officers and uniquely trained artisans who are the driving force behind ProApto camouflage systems. ProApto is commercialized worldwide by Synaptron. Contact us through our website for orders and collaborations.



ProApto independently developed and patented individual multispectral camouflage to provide adequate counter-thermal measures against the increasing proliferation of hand and rifle mounted thermal sensors, as well as against the escalating threat of thermal drones and UAS. ProApto anti-thermal camouflage provides simultaneous VIS - NIR and TIR concealment, maximizing soldiers' survivability by tuning human thermal signature to the environmental radiation (according to our data on experimental outdoor sessions).



FEATURES

ProApto multispectral camouflage is based on patented technology featuring the following specs:

- > thickness: from 0.1mm to 0.3mm
- > weight: from 120gsm to 350gsm
- > water-resistant / amphibious
- > breathable and not insulating
- > washable with no decay of multispectral performance
- > extremely silent
- > can undergo further treatments

Individual solutions range from 750gr to 5.5kg of weight. Below the weight ranges are reported for product types:

- > Poncho - from 750gr to 1.8kg
- > Full body camo - from 1.3kg to 3kg
- > Ghillie Suit - from 3.5kg to 5.5kg

Weight variations depend on the type of 3D camouflage required and environmental temperature ranges (winter or summer fabric).

2D AND 3D PATTERNS

ProApto's multispectral camo can be produced displaying 18 different **proprietary 2D patterns** and can be enhanced via other 12 3D camouflage patterns developed by ProApto over the years (**3D Ghillie patterns**). Individual systems also enable the application of vegetation to better blend into the environment.



2D-3D NIR-SWIR SIGNATURE MATCHING



ABOUT PROAPTO

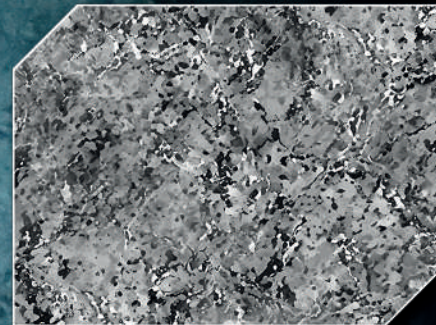
ProApto is an Italian-rooted brand established in 2015 in Rome. ProApto's personnel comprises neuroscientists, software engineers, graphic designers, former military officers and uniquely trained artisans who are the driving force behind ProApto camouflage systems. ProApto is commercialized worldwide by Synaptron. Contact us through our website for orders and collaborations.



2D PATTERNS

2D CAMOUFLAGE PATTERNS OVERVIEW

ProApto offers 18 different 2D camouflage patterns covering the vast majority of the biomes of the globe. 2D patterns are classified in two main families: Transitio and Exitium.

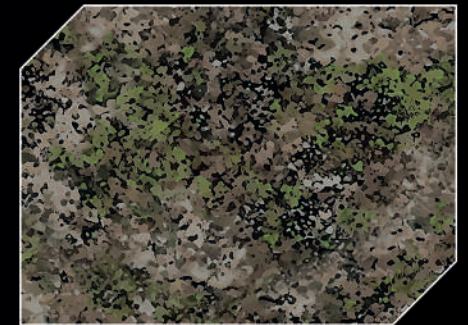


CLIMATE CLASSIFICATION OF USE



The EXITIUM family

From Ancient Latin *exitium*, *exitii* - meaning "doom/ destruction/ruin/death" - this cluster of patterns is designed to be used in environments characterized by human artifacts and in war scenarios/ aftermath. It includes a total of n.11 camouflage patterns for a wide variety of contexts.



CLIMATE CLASSIFICATION OF USE



The TRANSITIO family

From Ancient Latin *transitio*, *transitiōnis* - meaning "transition" - this cluster of patterns is designed to be used in nature away from human artifacts and is both suitable for military use and hunting/wildlife photography. It includes a total of n.7 camouflage patterns for a wide variety of contexts.



HIGH-RES VECTORIALS

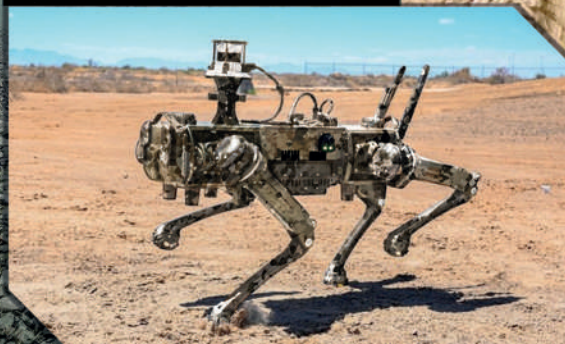
ProApto's 2D patterns are designed to disrupt the human body, but they can be scaled to cover objects, vehicles and buildings with high-resolution vectorials. Each pattern has an 8-color version and a 400-color file. [Licensing is Available](#) for various applications on demand.



JETS / HELICOPTERS



DRONE WARFARE



VEHICLES / CONTAINERS



SHELTERS / BUILDINGS

ABOUT PROAPTO

ProApto is an Italian-rooted brand established in 2015 in Rome. ProApto's personnel comprises neuroscientists, software engineers, graphic designers, former military officers and uniquely trained artisans who are the driving force behind ProApto camouflage systems. ProApto is commercialized worldwide by Synaptron. Contact us through our website for orders and collaborations.



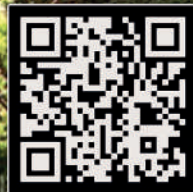
GHILLIE SUITS OVERVIEW

GHILLIE SUIT RENOVATION

ProApto revised and extended the traditional Ghillie Suit design, proposing an innovative system that minimizes the common problems related to Ghillie suit usage. Overheating, cumbersomeness, heavy weights and textile freezing are issues the operator won't experience using ProApto Ghillies. ProApto's multipurpose design ensures high breathability, low weight and unpaired modularity and versatility in any environment and weather. All ProApto Ghillie suits offer high 3D camouflage effectiveness (VIS and NIR), fundamental aspect in modern and future warfare.

ANTI-DRONE SOLUTIONS

Drone warfare mandates high 3D camouflage effectiveness. Here below an example of the visual effectiveness of a ProApto full body Ghillie made in pattern n.10 MultiBiome (drone distance: 50mt).





3D PATTERNS

ProApto Ghillies can be produced in 12 different 3D VIS-NIR standardised camouflage patterns designed for all biomes of the globe, resulting in the widest Ghillie selection worldwide. 3D patterns range from natural fibers (jute and raffia) to waterproof and fireproof plastic alloys.



EFFECTIVENESS

ProApto Ghillies offer high 3D camouflage effectiveness (VIS-NIR) within and beyond the intended environment of use. 3D camouflage material is designed to blend into the operational environment while being efficiently deployed in the transitional biomes related to the main environment of use.

MODELS

ProApto Ghillie selection is based on 9 different modular models that can be produced in 12 different 3D patterns, comprising a total of 108 different Ghillie solutions.

ProApto Ghillie catalog ranges from upper body to lightweight full body coverage (no more than 2.5kg).



BASES

ProApto Ghillies are built on patented Ghillie bases designs. Ghillie bases are made using fully waterproof and highly durable plastic alloy, which is extremely breathable and lightweight. All bases allow the application of 3D elements and natural vegetation on their entire surface.

